

17th Annual INRICH Workshop Information Kit

May 25 - 26, 2026 • McMaster University • Hamilton, Ontario, Canada
Ron Joyce Children's Health Centre (RJCHC)



INRICH

McMaster
University 

 **McMaster
Children's
Hospital**
RON JOYCE CHILDREN'S
HEALTH CENTRE

17th Annual INRICH Workshop

Understanding and addressing developmental inequalities in children and young people

Developmental inequalities among children and young people are an urgent challenge requiring collaborative, evidence-based solutions. A growing body of research shows that large numbers of children and young people around the world are exposed to inequalities that hinder their development.

The 17th annual INRICH workshop will bring together researchers and partners to explore local and international perspectives, as well as solutions to reducing these disparities. Over two days, discussions will highlight a variety of initiatives, ranging from community voices to student contributions, to support meaningful impact on policy and practice. Together, these sessions aim to strengthen shared understanding and support actionable pathways to improving developmental equity for children and young people.

By facilitating dialogue between an international group of researchers and community partners on effective practices and areas for improvement in child and youth development, we aim to further inform intervention research and guide action across different sectors.

17th Annual INRICH Workshop



The organizers of the 2026 INRICH Workshop, held under the theme Understanding and addressing developmental inequalities in children and young people, wish to express their sincere gratitude to all partners and donors whose generous support made this event possible.

Through their contributions - whether broad institutional commitments or more targeted initiatives - these partners play a vital role in advancing research and dialogue on social inequalities in health. Their support helps to amplify community perspectives in academic and policy discussions, empower emerging researchers through increased visibility and recognition, reduce financial barriers to participation, foster meaningful international collaboration, and ultimately advance research that promotes equitable outcomes for children and families worldwide.

The organizers wish to acknowledge the longstanding engagement of the École de santé publique de l'Université de Montréal (ESPUM), whose commitment to research on social inequalities in health, particularly among children and youth, closely aligns with INRICH's mission. They also thank the Research Center Savoirs Partagés from the CIUSSS-du-Nord-de-l'Île-de-Montréal for its support, reflecting its institutional mandate and its research priorities in mental health, as well as in social and public health research.

17th Annual INRICH Workshop

Special recognition is extended to the Observatoire pour l'éducation et la santé des enfants (OPES) for its contribution to the next generation of researchers through the awarding student prizes.

Finally, the organizers acknowledge the generous support provided through institutional and philanthropic contributions, including those associated with Hamilton Health Sciences and McMaster University.





JOSIE DICKERSON



ANNA PRICE



EMMANUELLE ARPIN



BALTICA CABIESES

INRICH Team

We are pleased to welcome you to the **17th Annual INRICH Workshop**, dedicated to ***Understanding and Addressing Developmental Inequalities in Children and Young People***. This year's theme underscores the urgency of strengthening evidence, collaboration, and cross-sector dialogue to improve developmental equity worldwide.

We are excited to be hosting our first INRICH Workshop as the new leadership team for INRICH! INRICH is now a Charitable Incorporated Organisation (Charity No. 1215232) focussed on the Advancement of Education for the Public Benefit on the Subject of Inequalities in Child Health. It feels particularly apt that our first workshop with this new mission has a focus on equity in child development.

We extend our sincere gratitude to Dr. Olaf Kraus de Camargo, co-director of CanChild, for hosting this year's workshop and to the Ron Joyce Children's Health Centre (RJCHC) for welcoming the event within its facilities. Their support strengthens the collaborative spirit that defines our community.

On behalf of the INRICH leadership, Josie Dickerson, Emmanuelle Arpin, Anna Price, and Baltica Cabiezes, we thank you for your participation and dedication. We look forward to productive discussions and to advancing our shared mission of improving developmental opportunities for children and young people.



OLAF KRAUS DE CAMARGO

WELCOME TO THE 17TH INRICH WORKSHOP

On behalf of CanChild and as this year's host, we are delighted to welcome participants from across the international research community to this gathering.

The themes explored during this workshop align closely with our shared commitment to improving the participation, development, and well-being of children, youth, and their families.

Over the next two days, this workshop will provide a space for exchanging perspectives, discussing emerging ideas, and strengthening collaboration across teams and disciplines. These conversations contribute to advancing research while also supporting efforts to inform policy and guide actions that promote the full development of young people.

Thank you for being here and for contributing your expertise. We wish you a productive and engaging workshop and hope the program supports meaningful connections and new insights.

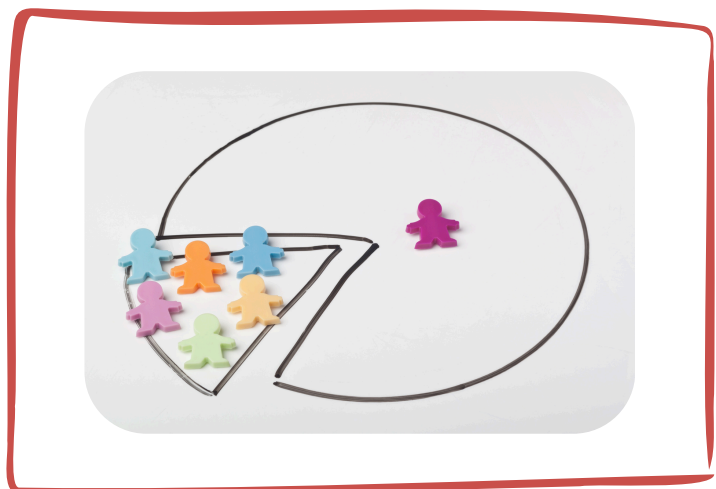


TABLE OF CONTENTS

2026 INRICH WORKSHOP	01
ACKNOWLEDGEMENTS	02
FOREWORD	04
TABLE OF CONTENTS	06
VENUE INFORMATION & DIRECTIONS	07
SOCIAL EVENT & DINNER DETAILS	10
PROGRAM SCHEDULE - DAY 1	13
PROGRAM SCHEDULE - DAY 2	15
POSTER SESSION PRESENTERS	17
EVALUATION SURVEY	20
STAY CONNECTED WITH INRICH	20
EXPLORE HAMILTON	21
USEFUL INFORMATION	28

Ron Joyce Children's Health Centre

Ron Joyce Children's Health Centre (RJCHC), a site of McMaster Children's Hospital, is home to a range of outpatient services focused on child rehabilitation and developmental health. Located in Hamilton's urban centre, RJCHC serves families living in the local community and throughout the region. It hosts Canada's largest prosthetics and orthotics program, which serves both children and adults across the country.

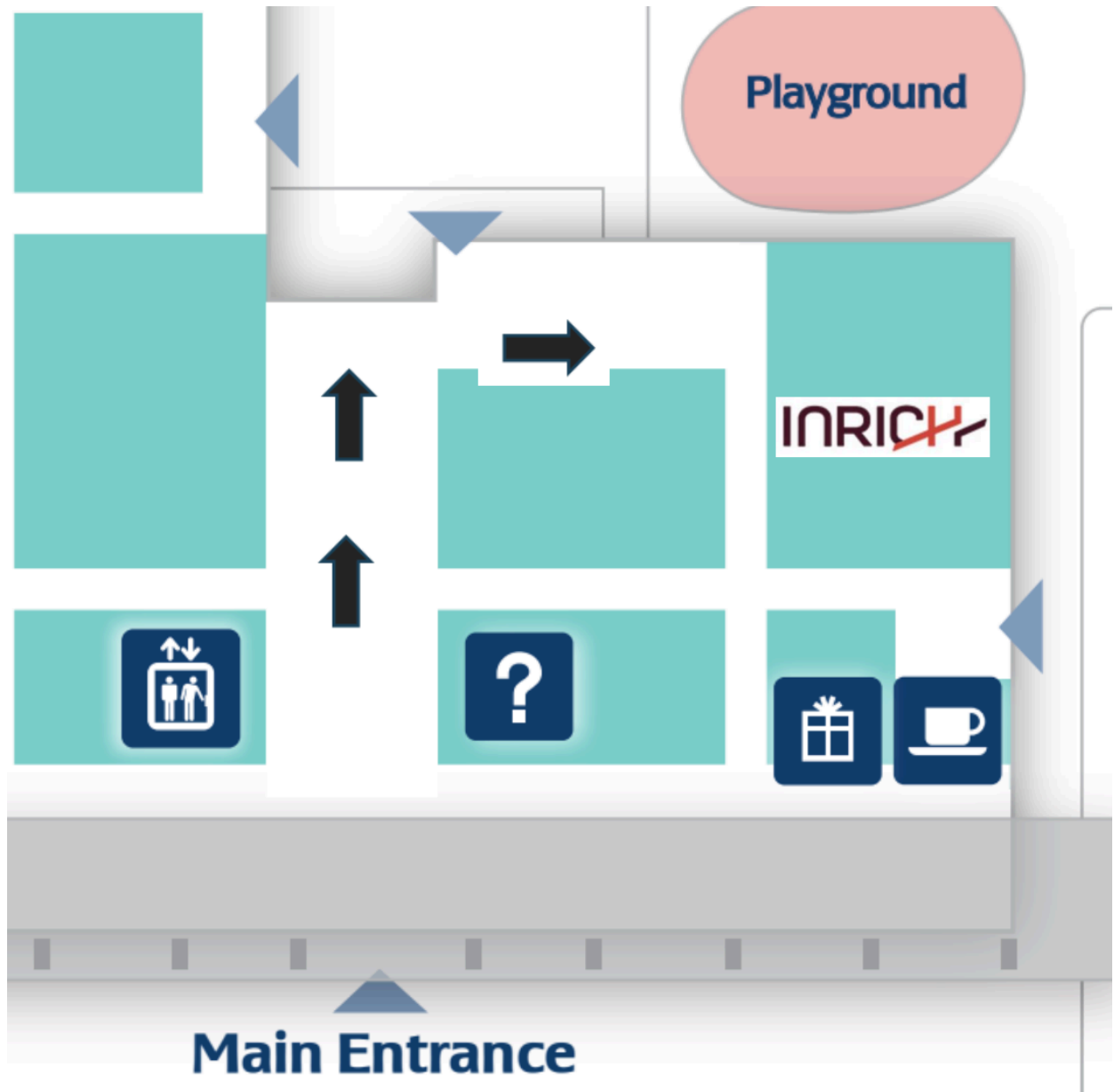
The building itself was purposefully constructed to provide a welcoming, nurturing space for patients and their families and has received awards for its unique, environmentally friendly design.

Wayfinding: 

First Floor Conference Room: Head towards the back of the building and turn right

- Sunnyside Café: Turn right upon entering
- Parking Machine and ATM: To the left of the front doors
- Teen Lounge: Straight through front doors to the back of the building
- Playground (open spring to fall): Head straight through front doors, through the doors located at the back of the building

Venue Information & Directions



How to Get Here

Driving – From Toronto:

- Take the Queen Elizabeth Way (QEQ) to Highway 403 West (to Hamilton).
- Exit Hwy 403 at Main Street West. At the top of the hill, turn left onto Main Street West.
- Continue along Main Street West for several blocks.
- Turn right into the hospital's driveway and follow signs to parking facilities.

→

Driving – From Brantford:

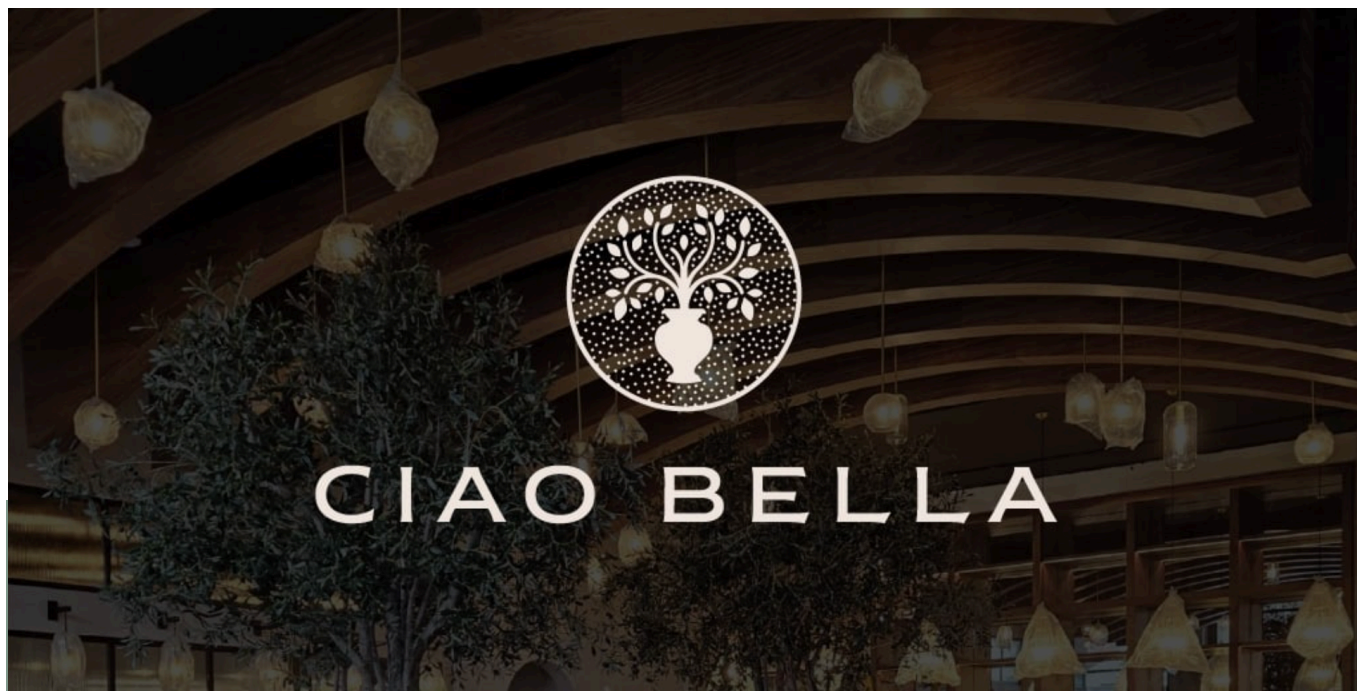
- Take Highway 403 East (to Hamilton). Exit Hwy 403 at Aberdeen Avenue.
- Turn left onto Longwood Avenue (first set of lights).
- Turn left onto Main Street West. Continue along Main Street West for several blocks.
- Turn right into the hospital's driveway and follow signs to parking facilities.

Public transit (HSR):

Several Hamilton Street Railway (HSR) bus routes services this area, including the 10 – B-Line and 1A - King which stop outside the hospital (Main at Emerson), and the 5 – Delaware and 51 – University which travel through McMaster University with stops close to the hospital entrance.

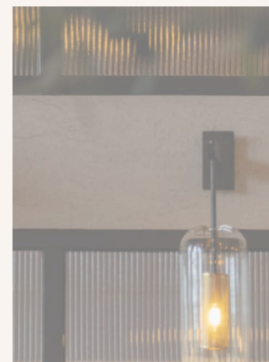
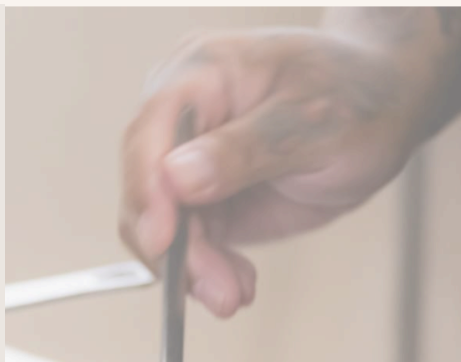
For information on Bus Routes and Schedules [click here](#)

Social Events & Dinner Details



**LOCATED IN THE
HISTORIC HAMILTON
NEIGHBOURHOOD OF
CORKTOWN, ABOVE
CIAO BELLA.**

**ADDRESS:
26 AUGUSTA ST,
HAMILTON, ON.**



**THE PENTHOUSE
MONDAY MAY
25th 2026
START TIME: 7 pm**





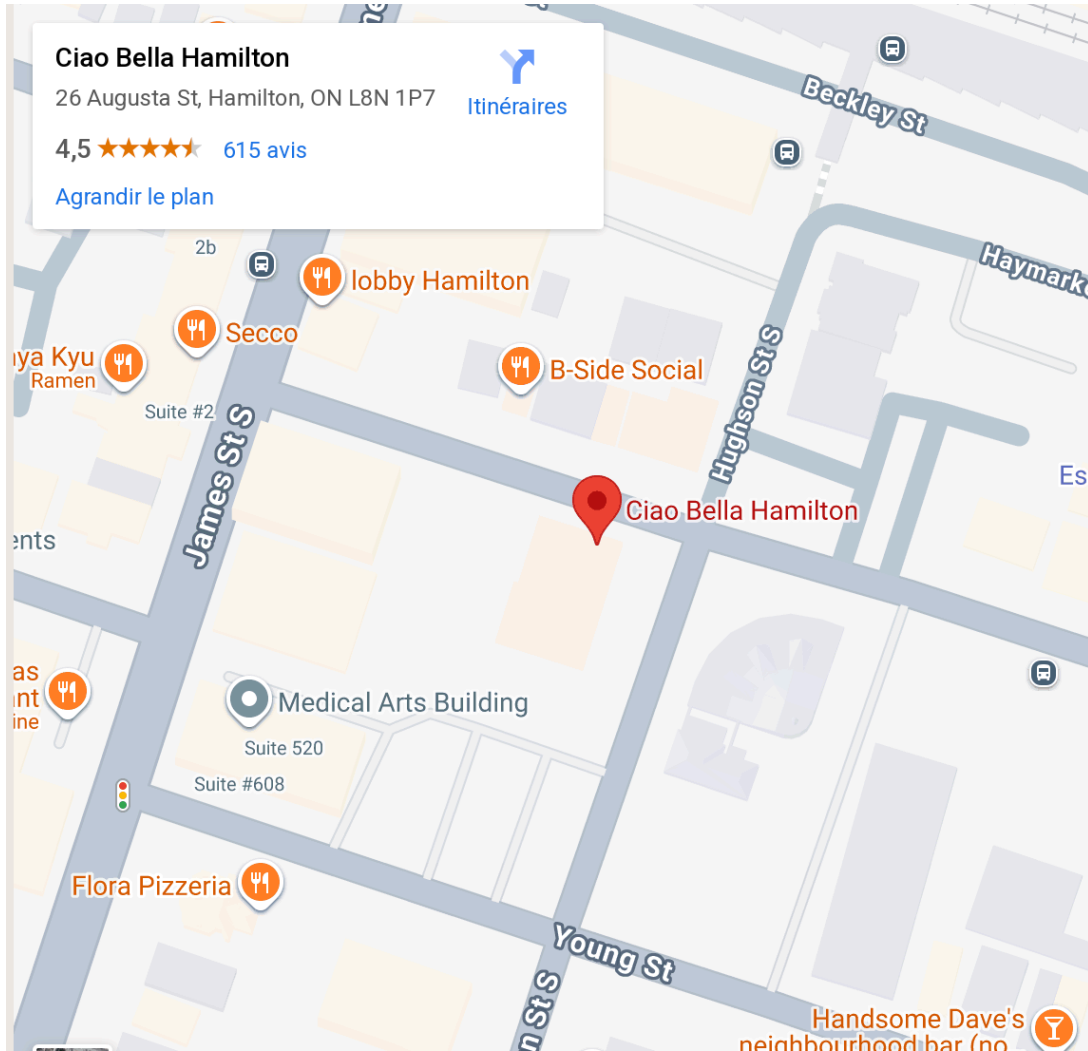
THE PENTHOUSE

ONE OF THE MOST
UNIQUE EVENT VENUES
IN HAMILTON,
ONTARIO.



Located above Ciao Bella restaurant on the 9th floor of the Chelsea Building, the Penthouse features floor to ceiling windows with expansive views of the city and escarpment. Experience our outdoor patio, with a dual sided bar and the best in hospitality for a day of love, romance and beauty.

Social Events & Dinner Details



[Get Direction](#)

17th Annual INRICH



Workshop

8:30am - 9:15am

Registration of participants and welcome coffee

9:15am - 9:30am

Welcome from INRICH leadership and opening remarks from local host **Olaf Kraus De Camargo**

Bloc 1: Opening Plenary

9:30am - 10:30am

Moderator: Emmanuelle Arpin

Speaker: Andrea Cross (McMaster University)

10:30am to 11:00 am Coffee break

Bloc 2: Local perspectives on developmental inequalities in children and young people: Centering on the voices of those most impacted

11:30am - 12:30pm

Moderator: Anna Price

Speakers:

- **Vanessa Tomas (CanChild, McMaster University) and Melanie Sheldon (Rehabilitation Centre for Children, Manitoba)**
- **Kinga Pozniak (CanChild, McMaster University), Vasilije Grahovac and Danijela Grahovac (CanChild, patient and parent partners, Ontario)**
- **Anne Fuller (Department of Pediatrics, Offord Centre, McMaster University)**

Program Schedule - Day 1: Monday, May 2026

1:00pm – 2:30pm

Group photo outside (12:30-12:45pm)

Lunch (12:45pm-1:30pm)

Tour of posters (1:30pm-2:30pm)

Bloc 3: Plenary Theme: International solutions to developmental inequalities in children and young people

2:30pm - 4:00pm

Moderator: Baltica Cabieses Speakers:

- **Alejandra Parra (IINARA Programme, Chile)**
- **Josie Dickerson (Better Start Programme, UK)**
- **Sharon Goldfeld (Changing Children's Chances Programme, Australia)**
- **Natasha Saunders (Saunders Policy Lab, SickKids, Canada)**

4pm - 4:30pm

Moderated discussion of the day presentations

(INRICH leadership)

7:00pm

INRICH dinner and networking event

Location: Penthouse, Ciao Bella

26 Augusta St, Hamilton, ON L8N 1P7

Program Schedule - Day 2: Tuesday, May 26

8:15am - 8:45am

Welcome coffee

Bloc 1: Keynote speaker

8:45am - 9:45am

Moderator: Josie Dickerson

Speaker: Gita Wahi (Department of Pediatrics, McMaster University Children's Hospital)

09:45am to 10:15am Coffee break

Bloc 2: Presentations

Theme: Student presentations (selected abstracts)

10:15am – 11:15am

Moderator: Baltica Cabieses

• **Nicholas Grubic (University of Toronto, Canada)**

Social gradient in activity-specific screen use by family affluence: cross-sectional study among Canadian school-aged children

• **Jarod Benoit (University of Alberta, Canada)**

Income Inequality and Mental Health Among Canadian Adolescents: The Mediating Role of School-Based Mental Health Service Availability

• **Leah Atwell (University of Exeter, UK)**

Addressing early childhood inequalities through parent involvement: A realist investigation of community-based service design

Program Schedule - Day 2: Tuesday, May 26

11:15pm-12:00pm

**INRICH Annual General Meeting
(led by internal INRICH Leadership)**

**12:00pm - 1:00pm
Lunch and Tour of posters**

Bloc 3: Research from INRICH members

1:00pm - 2:30pm

Moderator: Anna Price

Speakers:

- **Lise Gauvin (University of Montreal, Canada)**
- **Anders Hjern (Karolinska Institutet, Sweden)**
- **Lynn Kemp (Western Australia University, Australia)**

Bloc 4: Final panel

Theme: Reflections on policy, impact and scaling-up

2:30pm - 3:30pm

Moderator: Emmanuelle Arpin

Panelists:

- **Meta Van Den Heuvel (SickKids, Canada)**
- **Mira Johri (University of Montreal, Canada)**
- **Erica Perry (Ministry of Children, Community and Social Services, Ontario, Canada)**

Closing remarks

3:30pm – 4:00pm

**Announcement of location and host for the 2027 meeting:
Karolinska Institutet, Sweden (with Anders Hjern)**

Rosalyn Arnold, University of Liverpool

Co-authors: David Taylor-Robinson, Dougal Hargreaves, Rachel Loopstra
Did the UK two-child benefit limit increase household food insecurity? A difference-in-differences analysis

Leah Attwell, University of Exeter

Co-authors: Jenny Lloyd, Ruth McGovern, Vashti Berry
Addressing early childhood inequalities through parent involvement: A realist investigation of community-based service design

Matty Beaudry, Université de Montréal

Co-authors: Evelina Pituch, Brigitte Vachon
Parents' perspectives on the acceptability of occupational therapy interventions in the Agir tôt program in Quebec: a mixed-methods study protocol

Audrey Beaulieu, Université de Montréal

Co-authors: Joelle Ducharme, Céline Thibeault, Bangaman C Akani, Daniela Ziegler, Dan Hogan, Gustavo C Corrêa, Heidi W Reynolds, Mira Johri
The Immunization Agenda 2030 Strategy to Reach Zero-Dose Children in Low- and Middle-income Countries: A Living Scoping Review

Jarod Benoit, University of Alberta

Income Inequality and Mental Health Among Canadian Adolescents: The Mediating Role of School-Based Mental Health Service Availability

Mikaela Brodén, Karolinska Institutet

Co-authors: Anders Hjerm, Johan Åhlén, Susanne Wicks, Malin Bergström
Unequal Beginnings: Paternal Perinatal Mental Health and Child Outcomes Across Socioeconomic Position – Planned Cohort Studies

Mikaela Brodén, Karolinska Institutet

Co-author: Emma Fransson, Malin Bergström
Unequal Beginnings: Fathers-to-be in Swedish Antenatal Care - Midwives' Attitudes and Clinical Practices

Julia Dabravolskaj, University of Toronto

Co-authors: Nicholas Grubic, Paul J. Veugelers, Katerina Maximova
Social gradient in activity-specific screen use by family affluence: cross-sectional study among Canadian school-aged children

Joelle Ducharme, Université de Montréal

Co-authors: Audrey Beaulieu, Mira Johri, Amy Reid, Ibrahim Dadari, Niklas Danielsson, John Fogarty, Hope Johnson, Laura Nic Lochlainn, Daniela C. Rodríguez, Maria El Bizri, Andrea C. Tricco, and Étienne V. Langlois.
Evidence-Based Interventions to Support the Integration of Immunisation Within Health Systems and Across Sectors: A Scoping Review Protocol

Lorena Mendonça De Albuquerque, Université de Montréal

Co-authors: Nazim Sadou, Ugochinyere Vivian Ukah, Gabriel Côté-Corriveau, Jessica Healy-Profitós, Nathalie Auger
Inequalities in maternal respiratory syncytial virus vaccination: Determinants of vaccine behavior

Jason Mulimba Were, University of Alberta

Co-authors: Kaelan Findlay, Kesia Muthuthotatil, Karen A. Patte, Scott T. Leatherdale and Roman Pabayoy

Income Inequality and Risk of Early Cannabis Initiation in a Prospective Adolescent Cohort in Canada: The Mediating Role of Depressive Symptoms

Rianna Pain-Andrejin, Université de Montréal

Co-authors: Justine Persouyre, Thiffya Arabi Kugathasan, Emmanuelle Arpin, Simon Bacon, Tracy Barnett, Mathieu Bélanger, Isabelle Doré, Olivier Drouin, Lise Gauvin, Mélanie Henderson, Benoît Mâsse, Marie-Eve Mathieu, Leslie Podlog, Patricia Tucker, Andraea Van Hulst, Sylvana Côté

Physical Activity and School Readiness among Preschool Children in Disadvantaged Neighbourhoods: A Pilot Cluster Randomized Controlled Trial of the Bouge Avec Moi Intervention in Montreal

Marion Perrot, Université de Montréal

Co-author: Mira Johri

Quantifying Inequalities in Early Childhood Development (ECD) in Low- and Middle-Income Countries (LMICs): A Multilevel Analysis of UNICEF Multiple Indicator Cluster Survey (MICS) Data

Wing Lam Tock, Université de Montréal

Co-authors: Slim Haddad, Richard E. Bélanger, Anne-Marie Turcotte-Tremblay, Rabi Joël Gansaonré, Scott Leatherdale, Lise Gauvin

Associations of Intersectional and School Contexts with Adolescent Movement Behaviours: A Cross-Classified Multilevel Analysis of Individual Heterogeneity and Discriminatory Accuracy (MAIHDA) of Data from the COMPASS-Québec 2023 Cohort

Evaluation Survey



Thank you for your feedback. Please click the link below after the workshop to help us improve next editions. Link: [Survey](#).

Stay Connected with INRICH

We strongly encourage you to visit our website for valuable information about the workshop itself, details on upcoming events, and comprehensive resources about the INRICH network as a whole. Link to the website: <https://inrichnetwork.org>



WHERE TO GO IN HAMILTON ...

Elegant Bars

[Secco](#) - Prosecco & cocktails in a refined atmosphere

[11:11 Cocktail & Raw Bar](#) — Sophisticated cocktails, intimate ambiance

[The Argyle](#) - Inventive drinks in a stylish golf-themed lounge

[The Brain](#) - Cozy, eclectic bar with curated drinks

Fine Dining Restaurants

[Ciao Bella](#) - Italian cuisine in an elegant setting

[Quatrefoil](#) - Contemporary French cuisine in an elegant setting

[Brothers Grimm Bistro](#) - Modern French-American dining

[Edgewater Manor](#) - Gourmet lakefront dining in a historic mansion

[Berkeley North](#) - Creative dishes in a modern, minimalist space

Premium Cafés

[Synonym](#) - Artisanal coffee & cultural vibe

[Saint James](#) - High-quality coffee & local favorite

[Detour Café](#) - Stylish café with specialty roasts



Make the most of your stay in Hamilton by discovering its cultural attractions. The following suggestions will help you make the most of your visit:

ART GALLERY OF HAMILTON



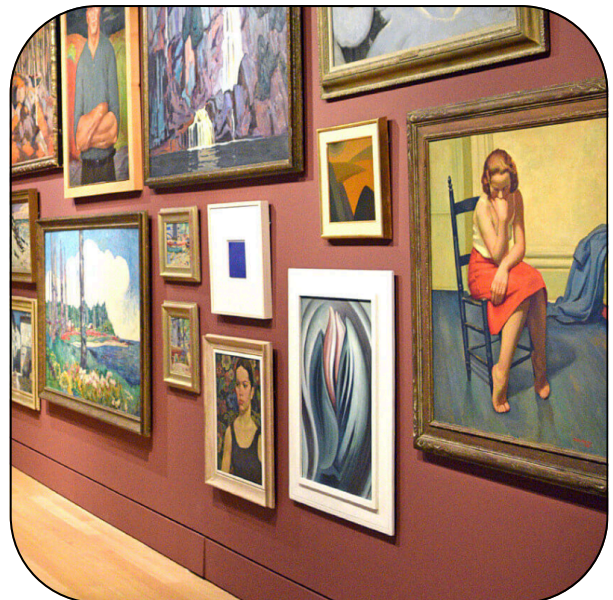
Art Gallery
of Hamilton

One of southern Ontario's largest and oldest art museums, featuring 10,000+ works across Canadian, Indigenous, and international collections.

Hours:

- Thu: 11:00 AM – 9:00 PM
- Fri: 11:00 AM – 6:00 PM
- Sat–Sun: 11:00 AM – 5:00 PM
- Mon–Wed: Closed

Website: [Plan your visit \(AGH\)](#)



DUNDURN CASTLE (National Historic Site)



Guided tours through a restored 40 room Italianate-style villa telling stories of the MacNab family and staff in the 1850s.

Hours:

- Tue - Sun: 12:00 PM – 4:00 PM
- Mon: Closed

Website: [City of Hamilton — Dundurn Castle](#)

ROYAL BOTANICAL GARDEN



Canada's largest botanical garden with multiple garden areas, seasonal exhibits, and extensive nature trails.

Hours:

- General (seasonal): Tue - Sun 10:00 AM - 5:00 PM
- Mon: closed
- Trails: 8:00 AM - dusk (daily)

Website: [RBG Hours & Map](#)

CANADIAN WARPLANE HERITAGE MUSEUM



Canada's largest flying museum with 40+ historic aircraft, simulators, and flight experiences.

Hours:

- Wed - Sun: 9:00 AM - 5:00 PM
- Mon - Tue: Closed

Website: [Museum Hours & Prices](#)

BAYFRONT PARK



Scenic waterfront park with multi-use trails, naturalized areas, boat launch, and picnic spots near downtown.

Hours:

- Typically open daily 6:00 AM - 11:00 PM

Website: [Tourism Hamilton - Bayfront Park](#)

Hours can vary by date/season or events. Always check the official site before visiting.

HAMILTON CIVIC MUSEUMS



www.hamilton.ca/museums

Hamilton Civic Museums highlight the city's diverse heritage through engaging exhibits and historic sites, offering visitors an accessible way to explore Hamilton's cultural past.

Hours:

- Typically open daily 10:00 AM - 04:00 PM

Closed on Mondays

Website: [Tourism Hamilton - Hamilton Civic Museums](#)



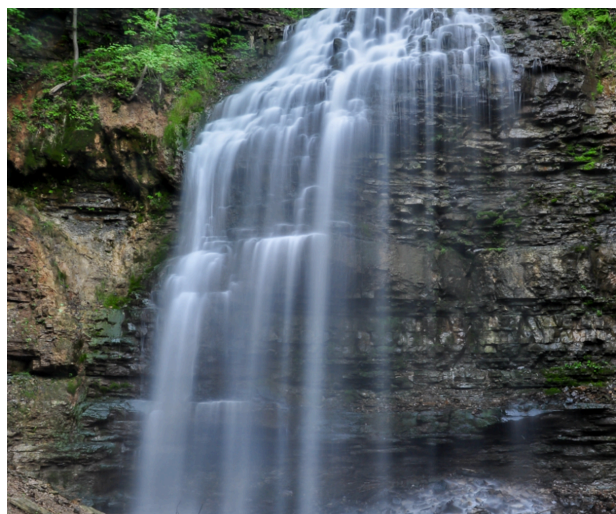
Indigenous experiences in Hamilton provide opportunities to learn about local First Nations, Métis, and Inuit cultures through community-led events, public art, and educational initiatives.

Website: [Tourism Hamilton - Indigenous Experiences](#)

HAMILTON: WATERFALL CAPITAL OF THE WORLD

Hamilton is home to more than 100 waterfalls, and with one of the highest number of waterfalls of any urban area of its size, has been called the Waterfall Capital of the World. Many of the waterfalls are found along the Niagara Escarpment and Bruce Trail, and can be easily accessed from groomed trails and viewing areas.

<https://www.cityofwaterfalls.ca/>



Explore Hamilton & Beyond

For those who want to explore beyond Hamilton, here are some other cultural outing suggestions.



[Toronto](#) offers a vibrant mix of culture, entertainment and iconic landmarks, such as the breathtaking views from the CN Tower and the historic charm of the Distillery District. The Royal Ontario Museum is a must-visit for anyone interested in world-class exhibitions.



If you prefer a more natural experience, [Niagara Falls](#) is just a short trip away. You can appreciate the stunning sights up close on a boat tour, and the scenic viewpoints provide the perfect backdrop for memorable photos. The nearby town of Niagara-on-the-Lake boasts delightful wineries and boutiques, making it a perfect destination for a day trip.

Hamilton, Ontario, Canada 25 - 26 May 2026

WEATHER OVERVIEW (Late May)

Average daytime temperature: 17 - 19°C.

Average nighttime temperature: 8 - 9°C.

Rainfall: About 11 rainy days (~69 mm) - a light raincoat is advised.

What to Bring:

Light layers, compact umbrella, comfortable walking shoes,
Sunglasses, sunscreen

Daylight: Around 14.5 hours

Sunrise ~04:45 - 05:00

Sunset ~19:45 - 19:52

Humidity: Around 76%.

UV Index: Moderate (5) - sunscreen recommended.

LOCAL TRANSPORTATION

HSR – Hamilton Street Railway (City Bus Service)

Schedules & routes: <https://www.hamilton.ca/transit>

GO Transit (Regional Service): <https://www.gotransit.com>

Taxis & Rideshares: Uber, Lyft, Hamilton Cab, Blue Line Taxi.



The International Network for Research on Inequalities in Child Health (INRICH) is a Charitable Incorporated Organisation (Charity number: 1215232), whose charitable objective is:

THE ADVANCEMENT OF EDUCATION FOR THE PUBLIC BENEFIT ON THE SUBJECT OF INEQUALITIES IN CHILD HEALTH IN PARTICULAR BUT NOT EXCLUSIVELY BY PROMOTING OR SUPPORTING RESEARCH IN ALL ASPECTS OF THAT SUBJECT AND PUBLISHING AND DISSEMINATING THE USEFUL RESULTS.

In fulfilling this mission, INRICH has held 16 workshops since 2008 and continues to share research and ideas among its members throughout the year.