

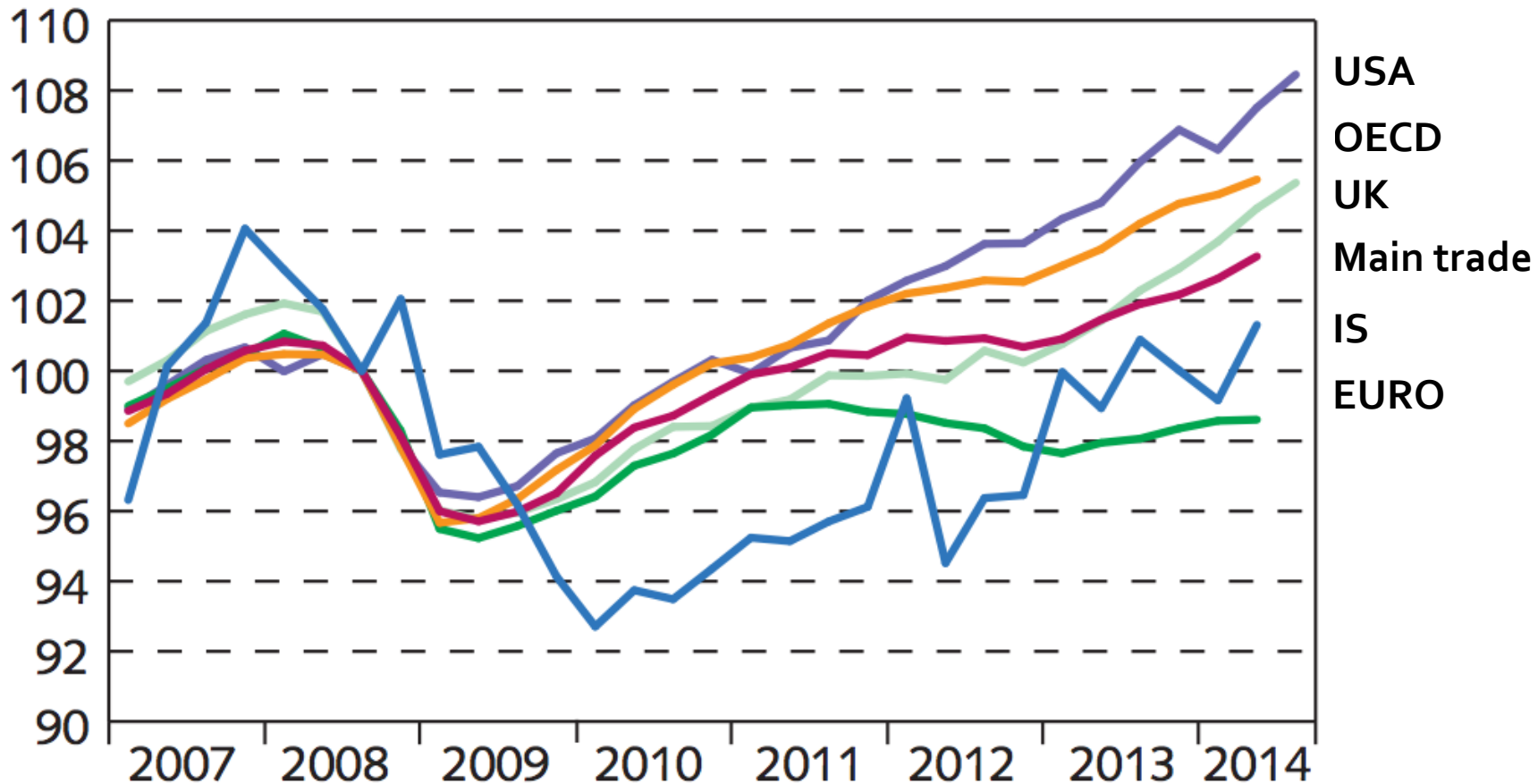
Impact of an Economic Collapse on Child Health in Iceland

Geir Gunnlaugsson, MD, PhD, MPH
Professor of Public Health, Reykjavik University



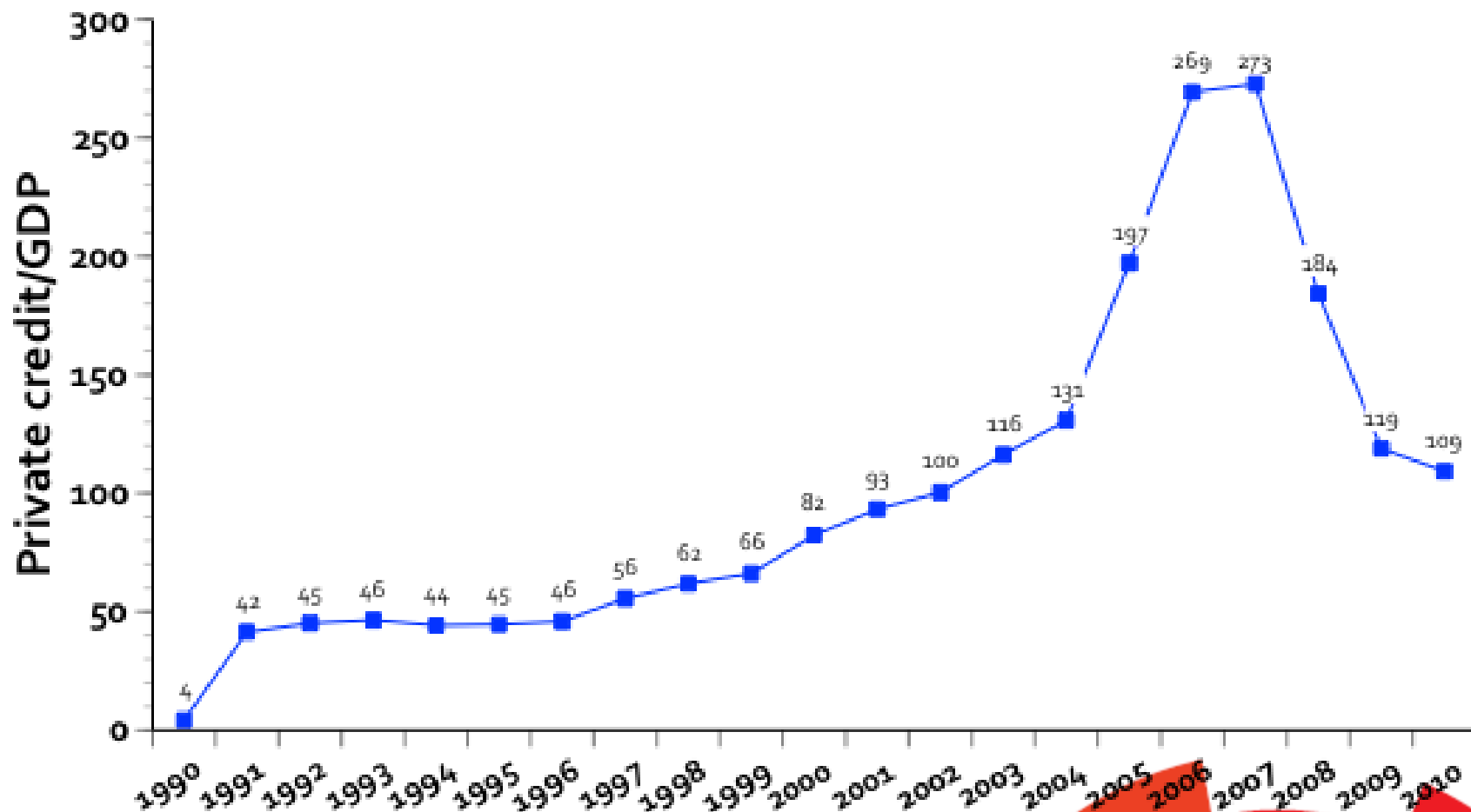
Gross Domestic Product Iceland 2007-2014

Index, Q3 2008=100



Credit boom as share of GDP

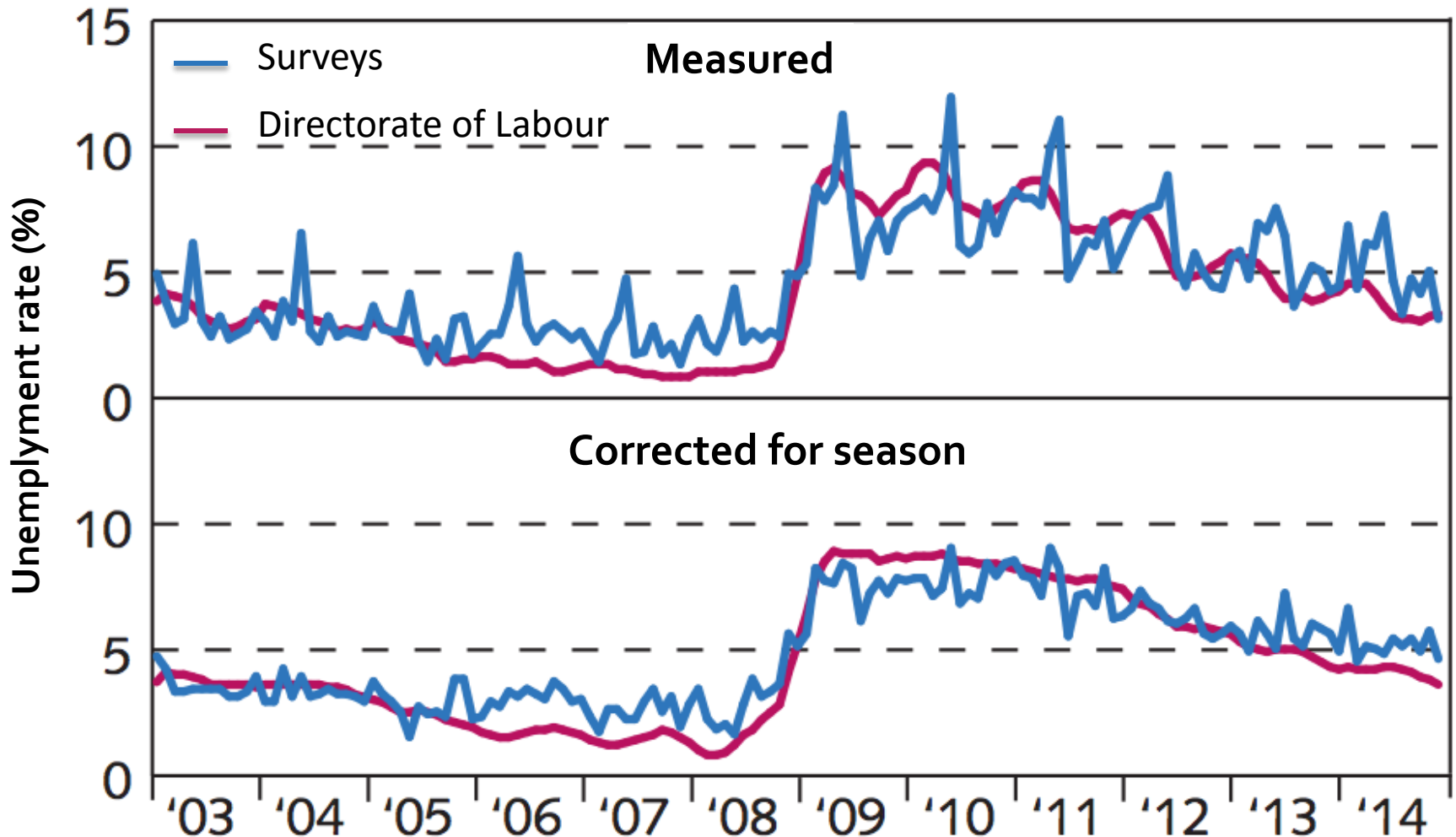
Credit to the private sector in Iceland 1990-2010



Bringing down a banking system. Lessons from Iceland.

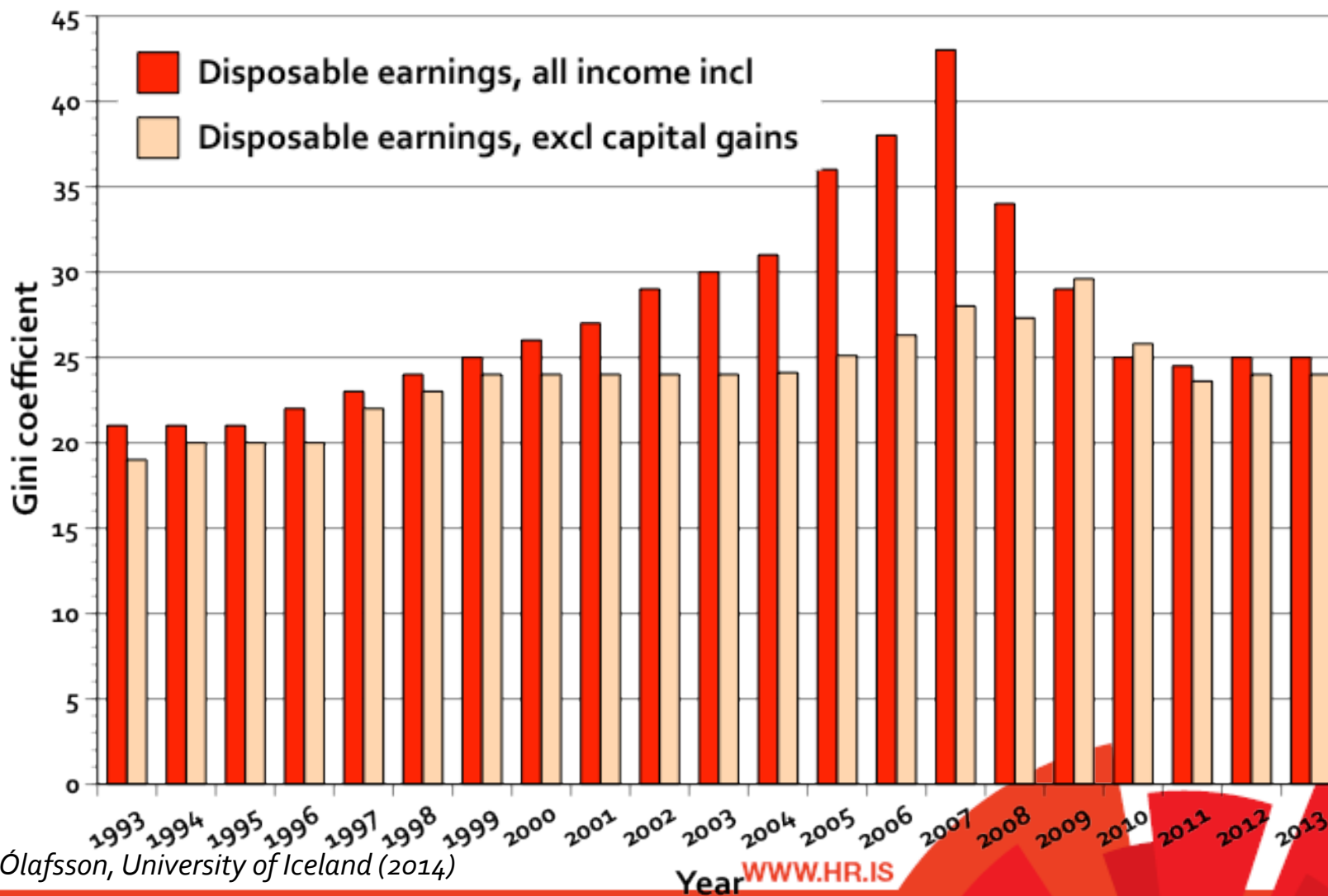
Guðrún Johnsen, 2014.

Unemployment Iceland 2007-2013



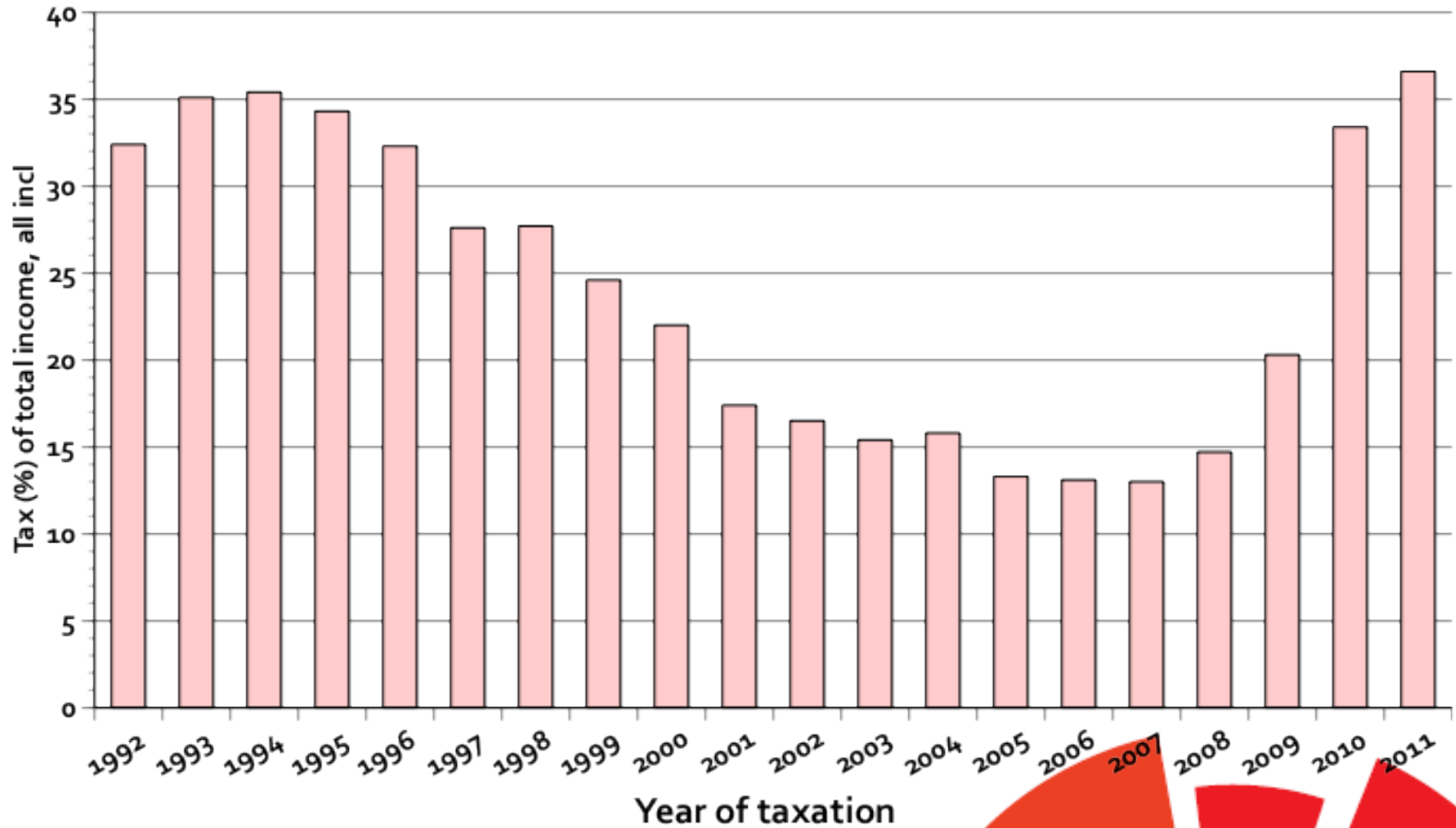
Gini Coefficient

Iceland 1993-2013



Total effective tax burden

Top 1% in Iceland 1992-2011



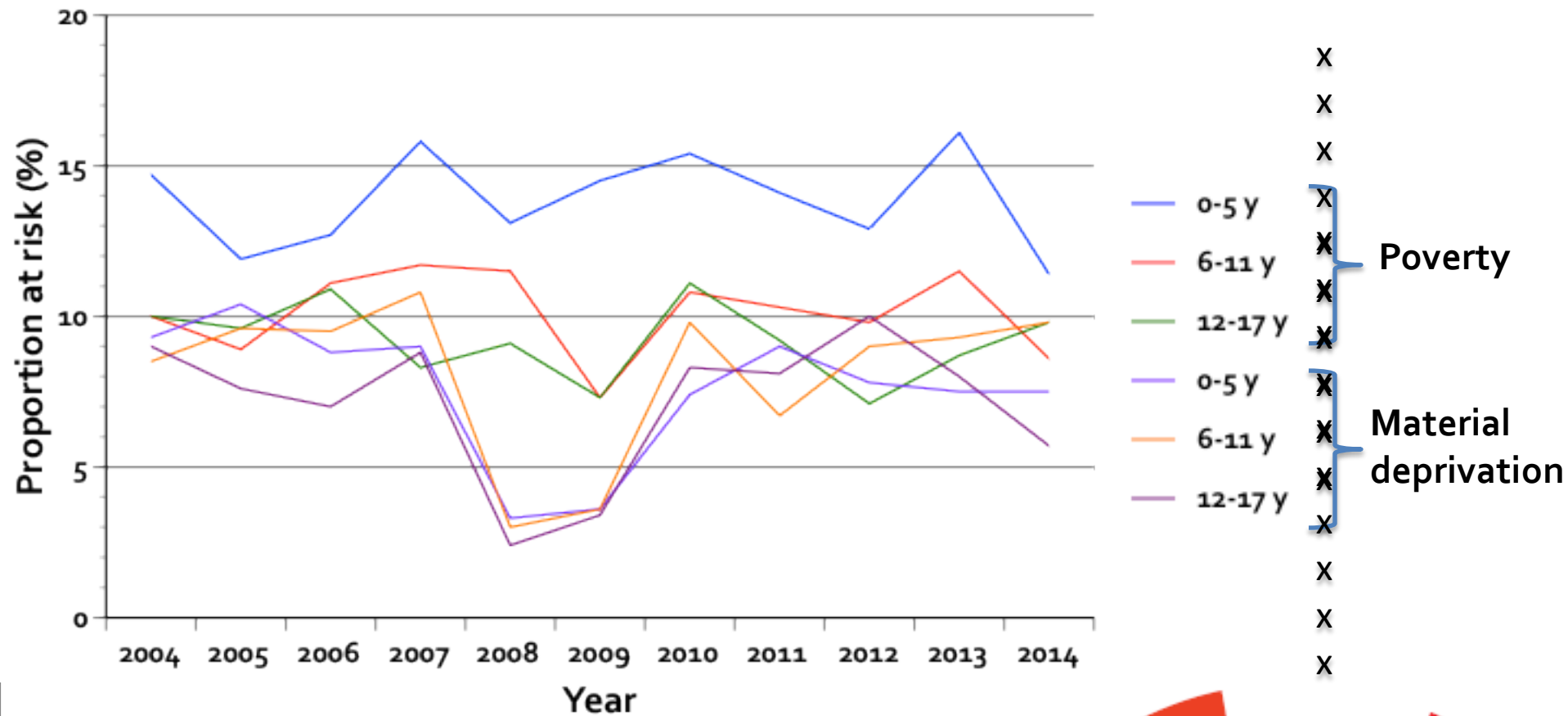


IMPACT ON CHILD POVERTY & MATERIAL DEPRIVATION

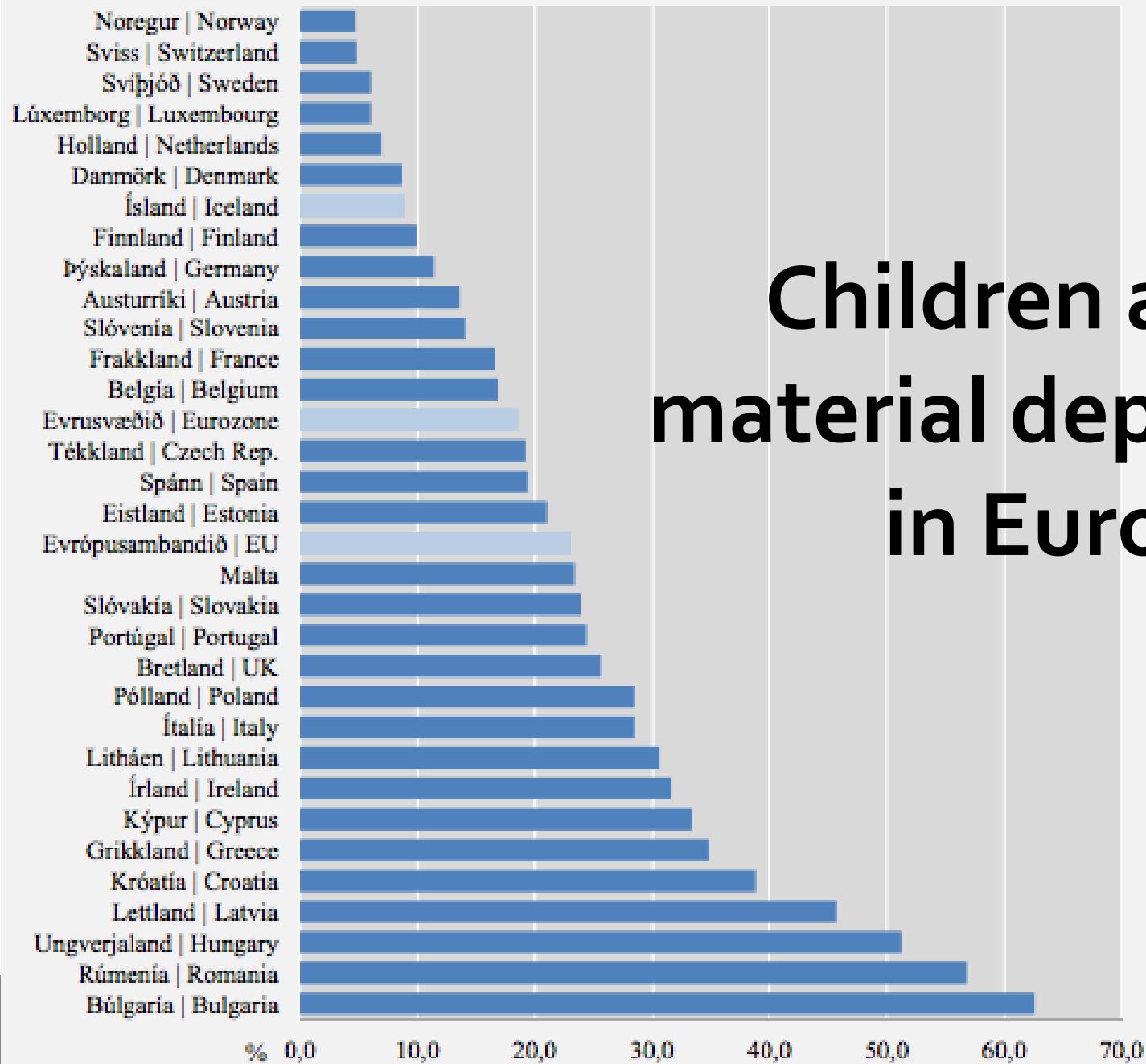


At risk of poverty and material deprivation by age

Iceland 2004-2014



Children at risk of material deprivation in Europe 2012

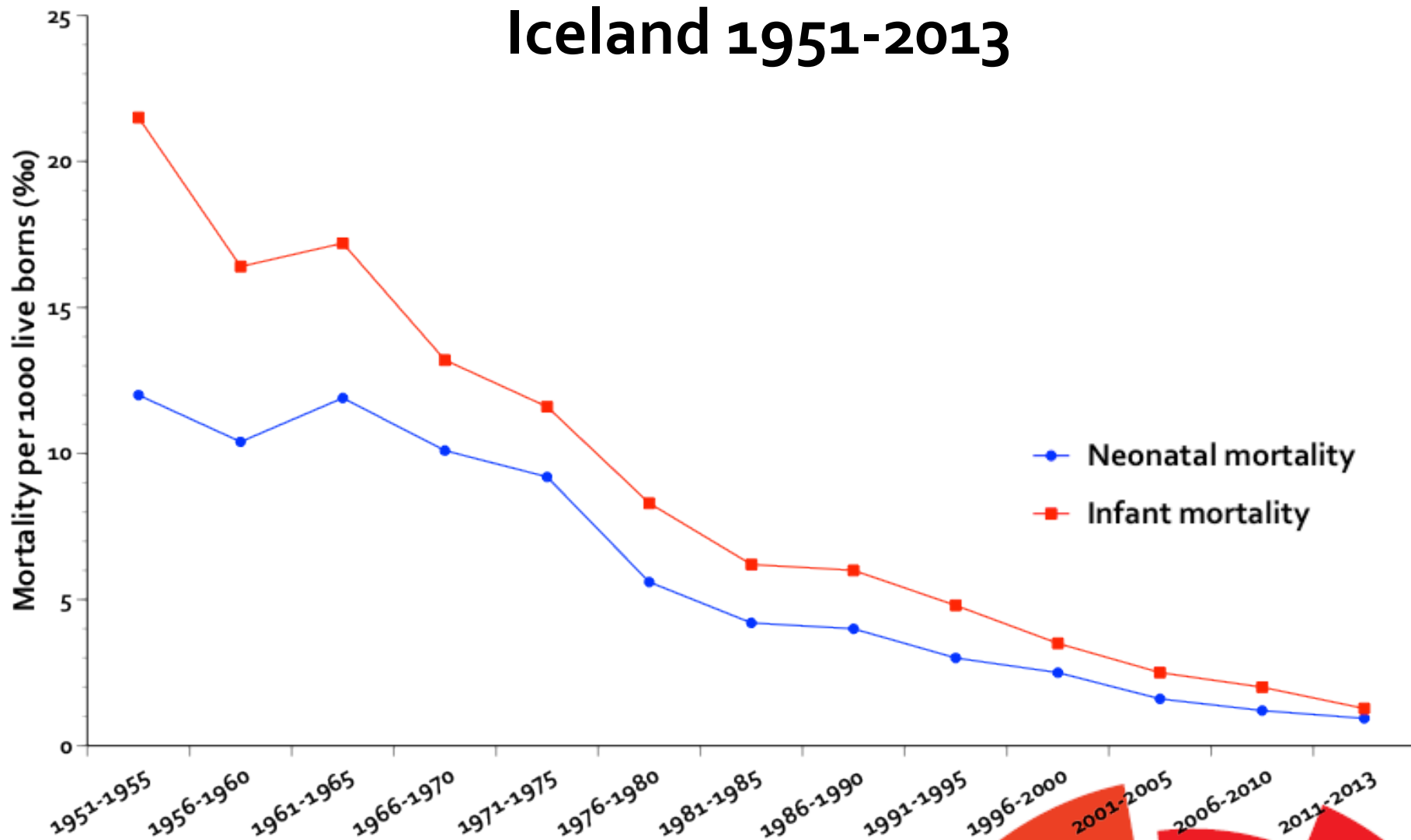


Has the economic crisis had an impact on child health in Iceland?

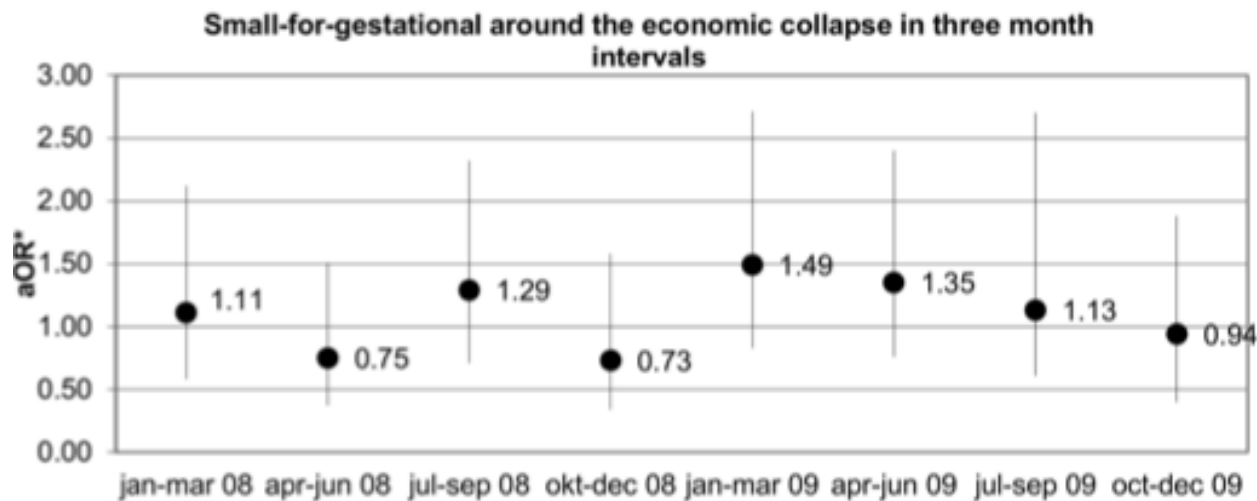
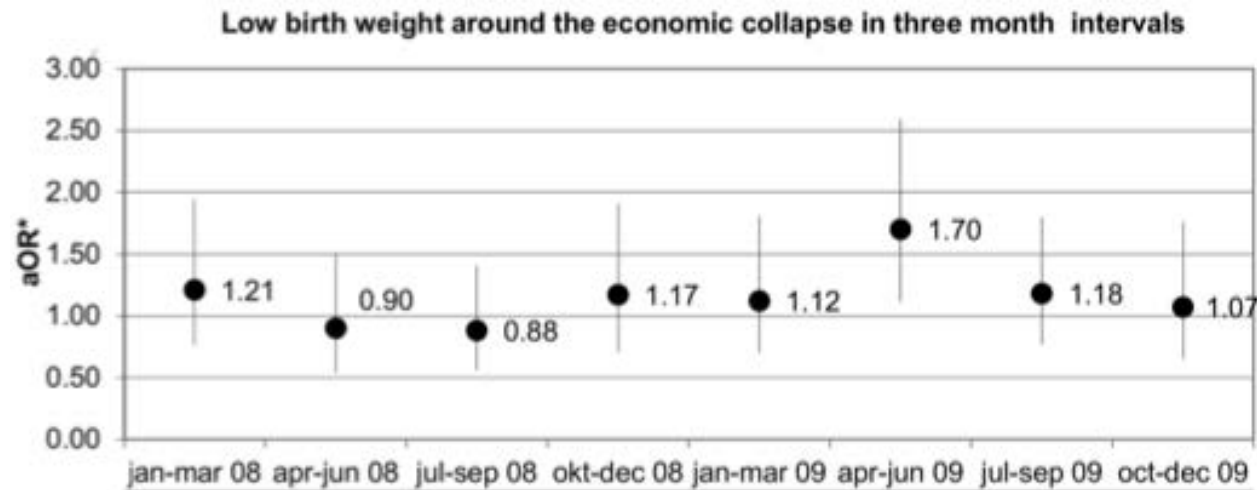


14 4 2010

Infant mortality Iceland 1951-2013

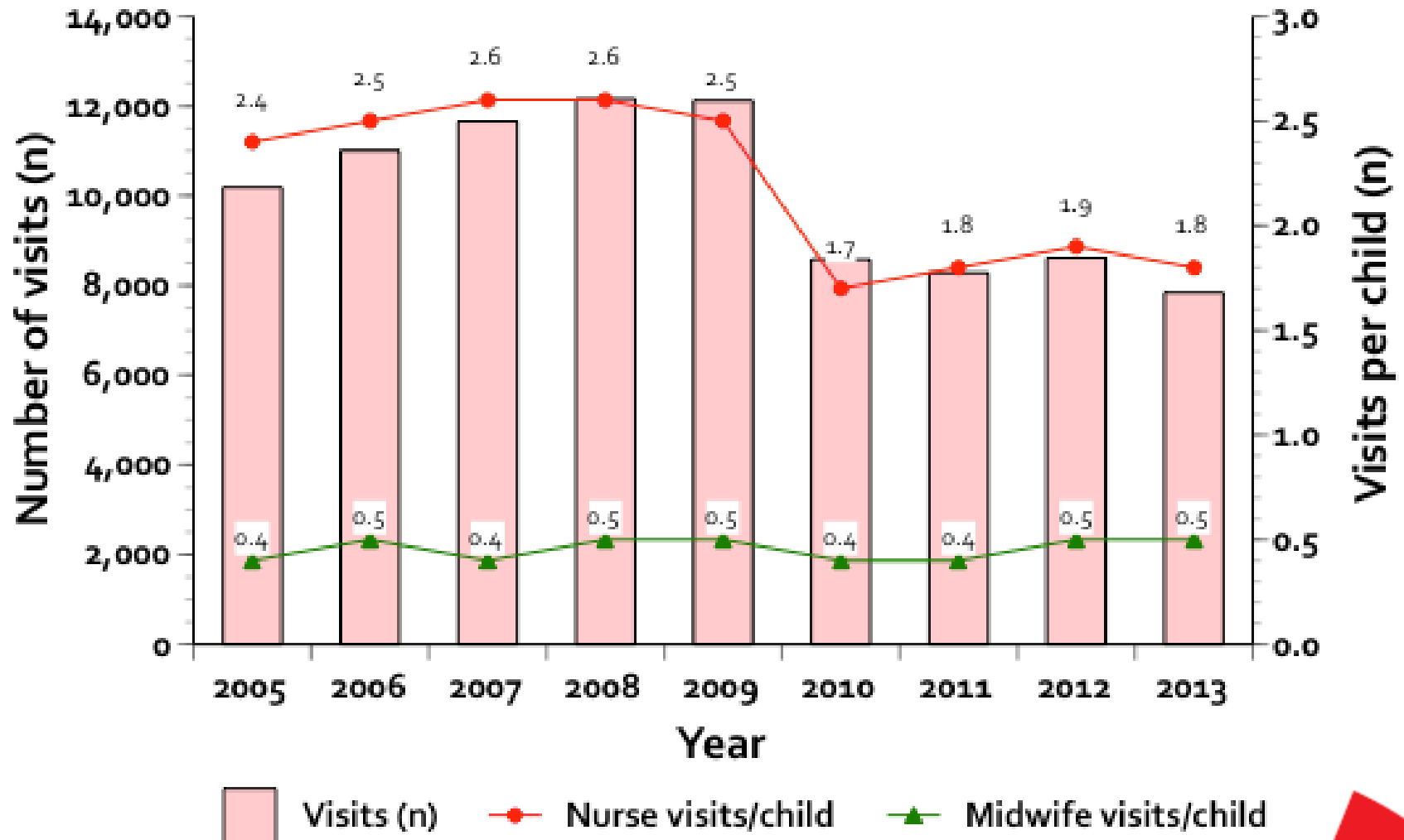


Crisis and perinatal health Iceland January 2008-December 2009

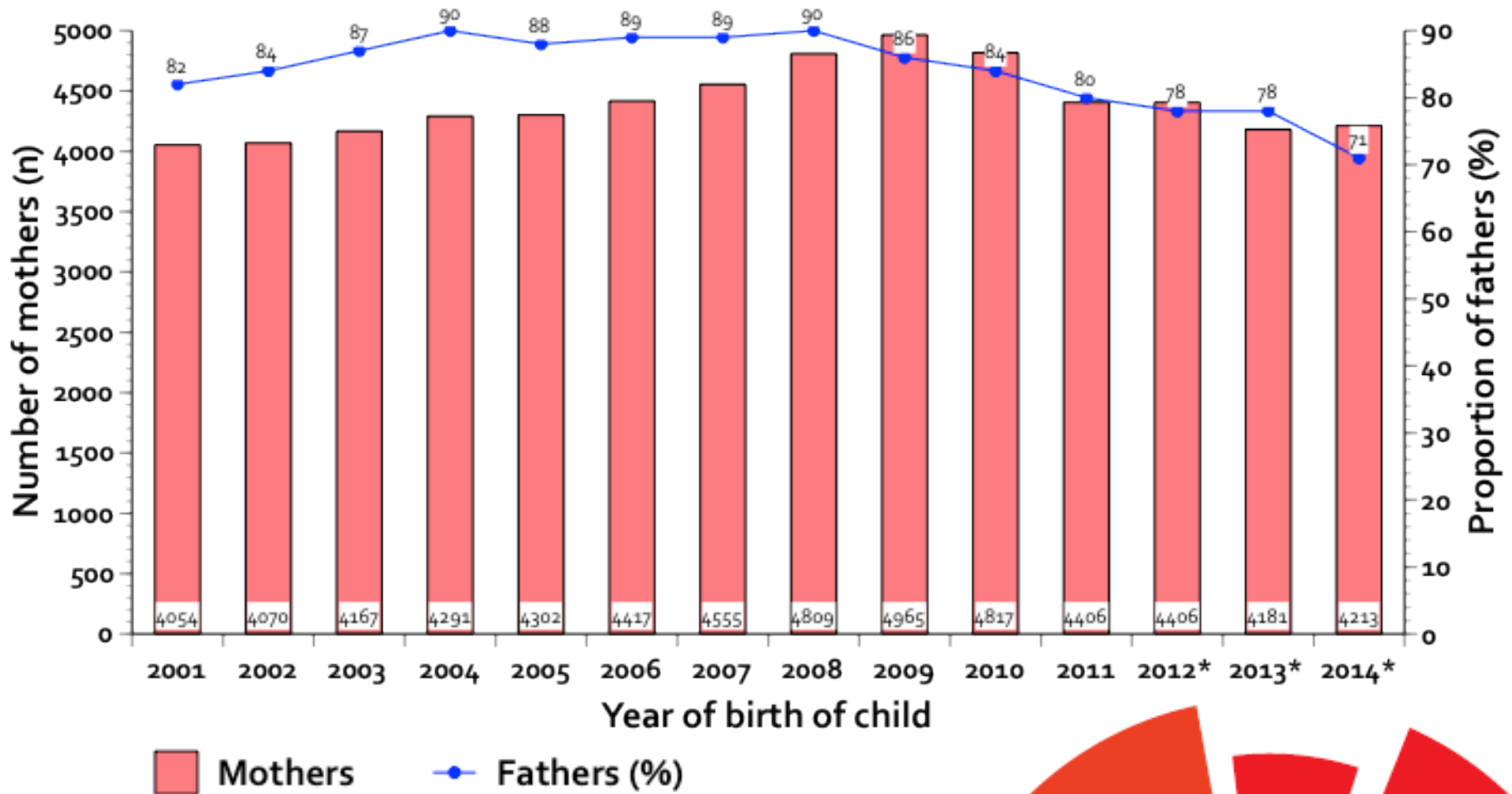


Home visitations for newborns

Iceland 2005-2013



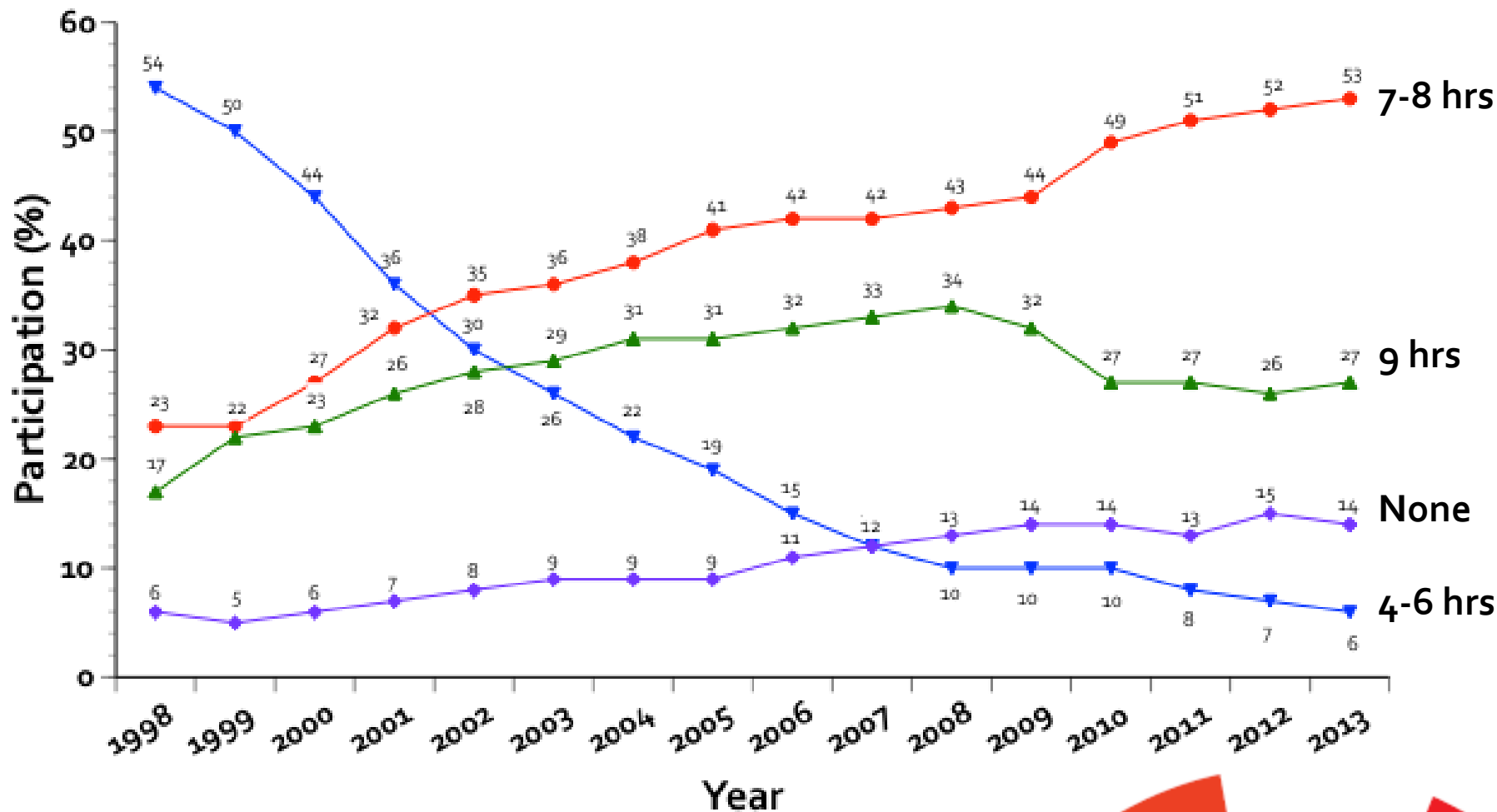
Use of maternity/paternity leave Iceland 2001-2014



Data from Maternity/Paternity Leave Fund; * Preliminary data

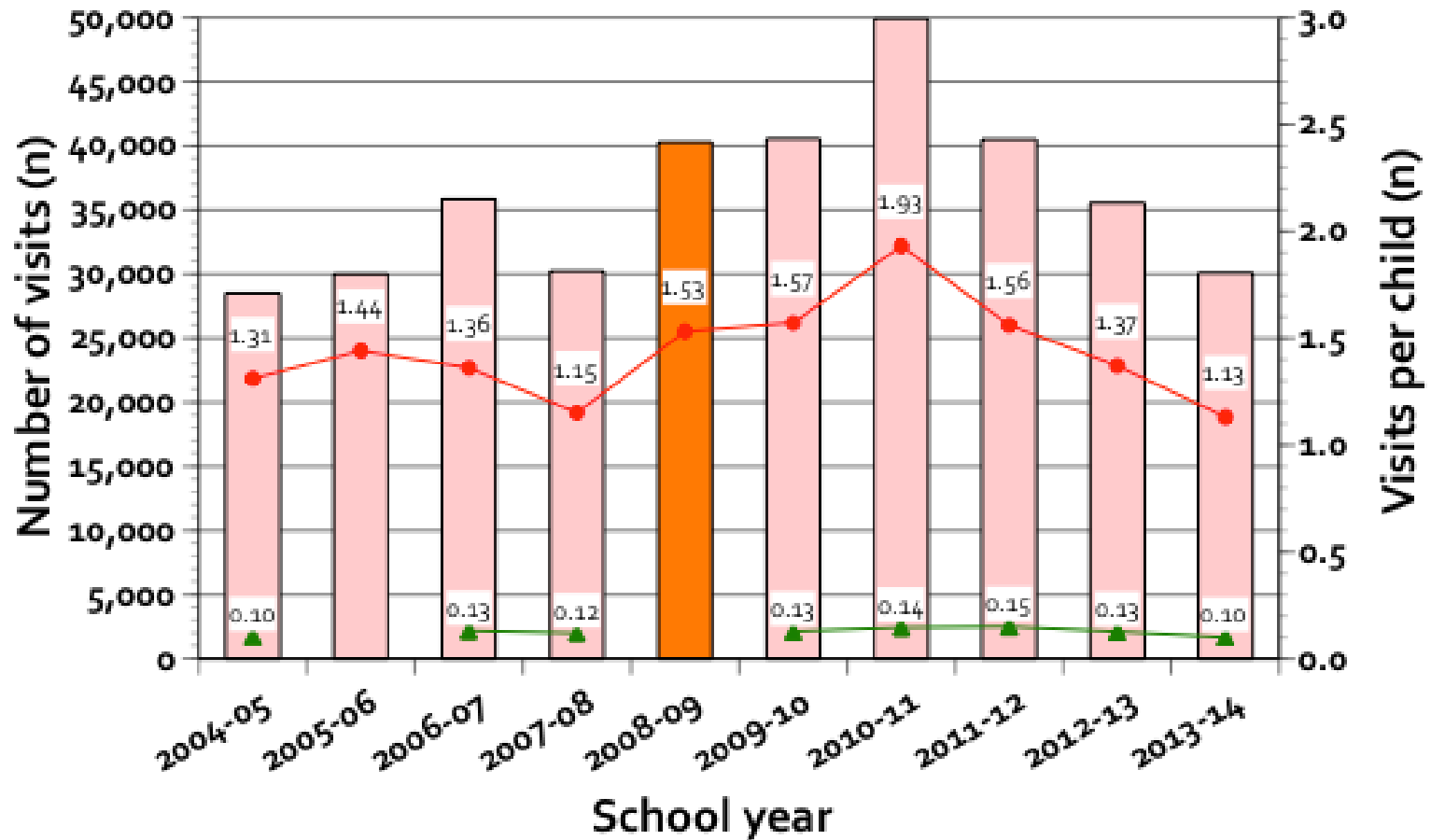
WWW.HR.IS

Participation in pre-schools Iceland 1998-2013



Visits to school health nurse

Reykjavik Capital Area 2004-2014

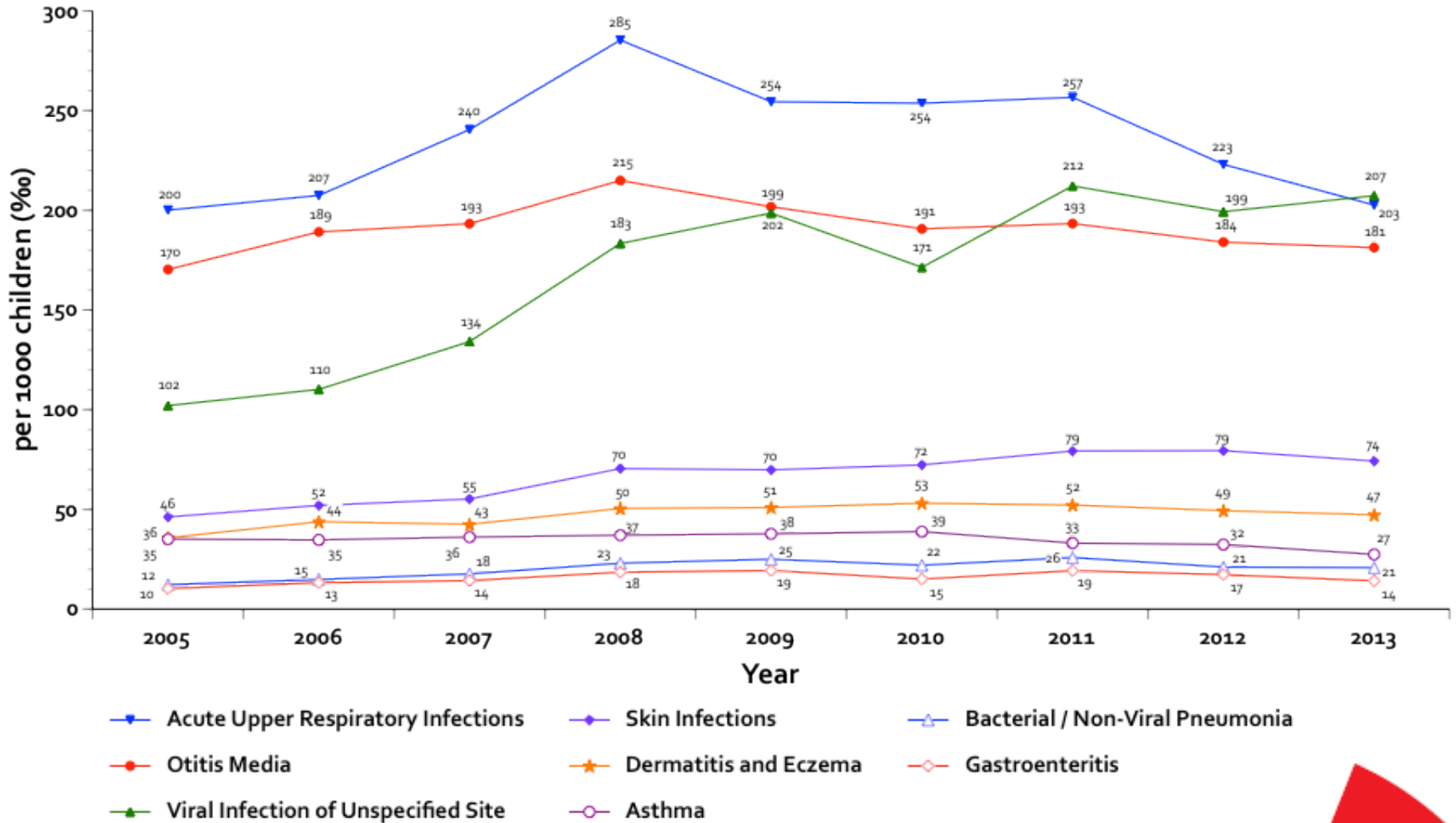


Visits (n)
 Visits per child
 "Not feeling well" per child (n)

Compulsory school 6-15 years
 Primary Health Care Organisation, 2015

Diagnosis* in Primary Health Care

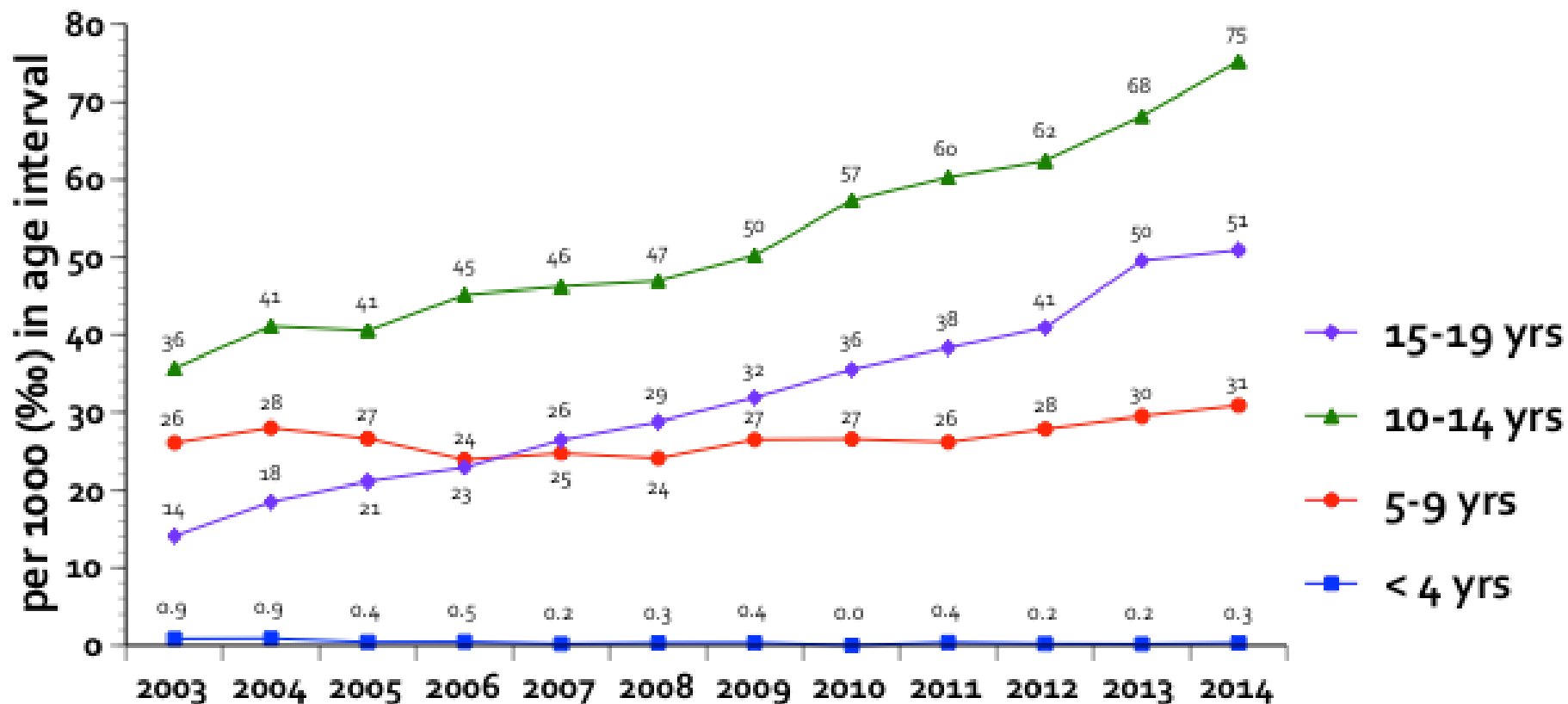
Children <18 years, Iceland 2005-2013



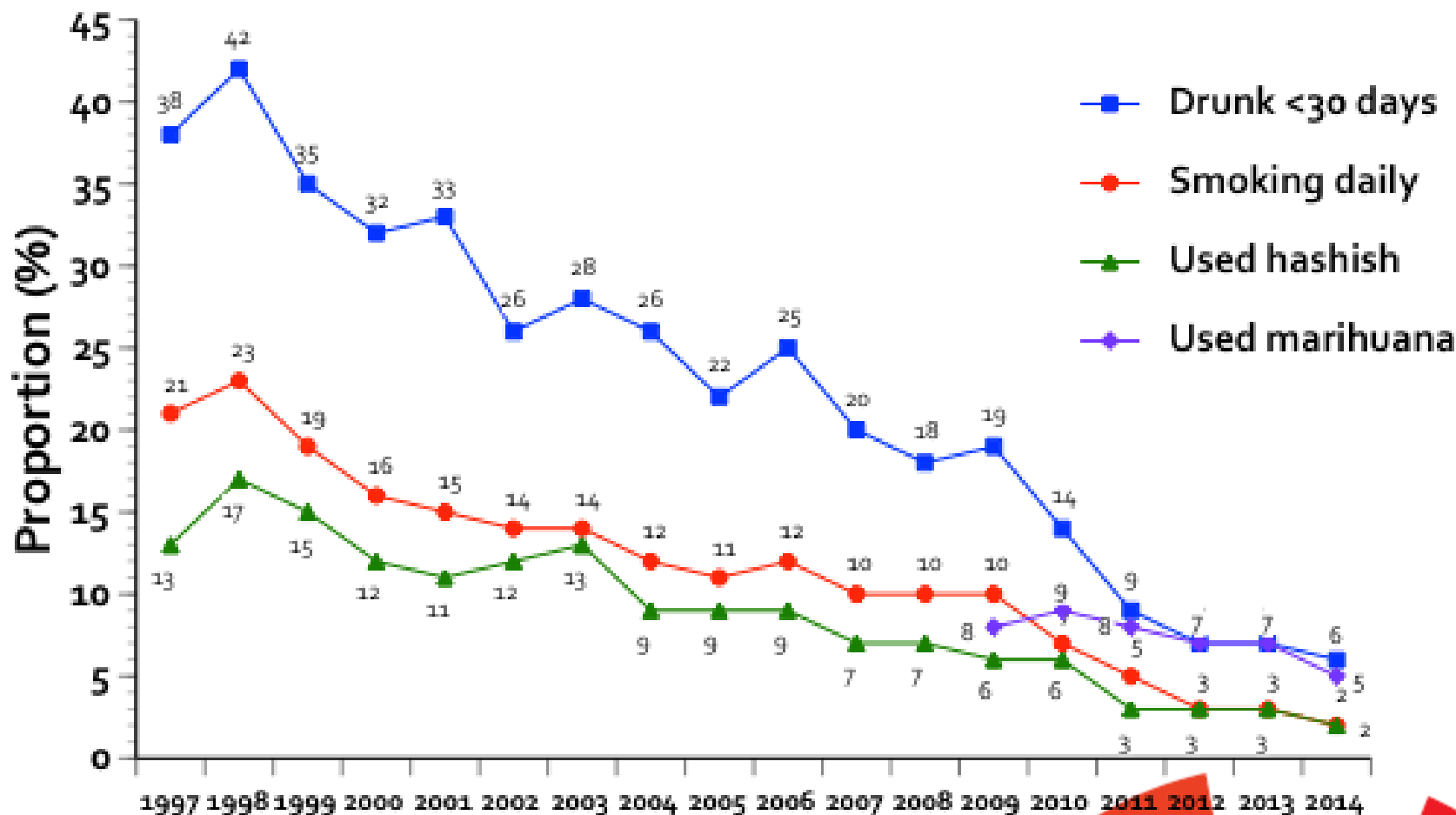
* Builds on Child Poverty Monitor, New Zealand

Use of methylphenidate by age

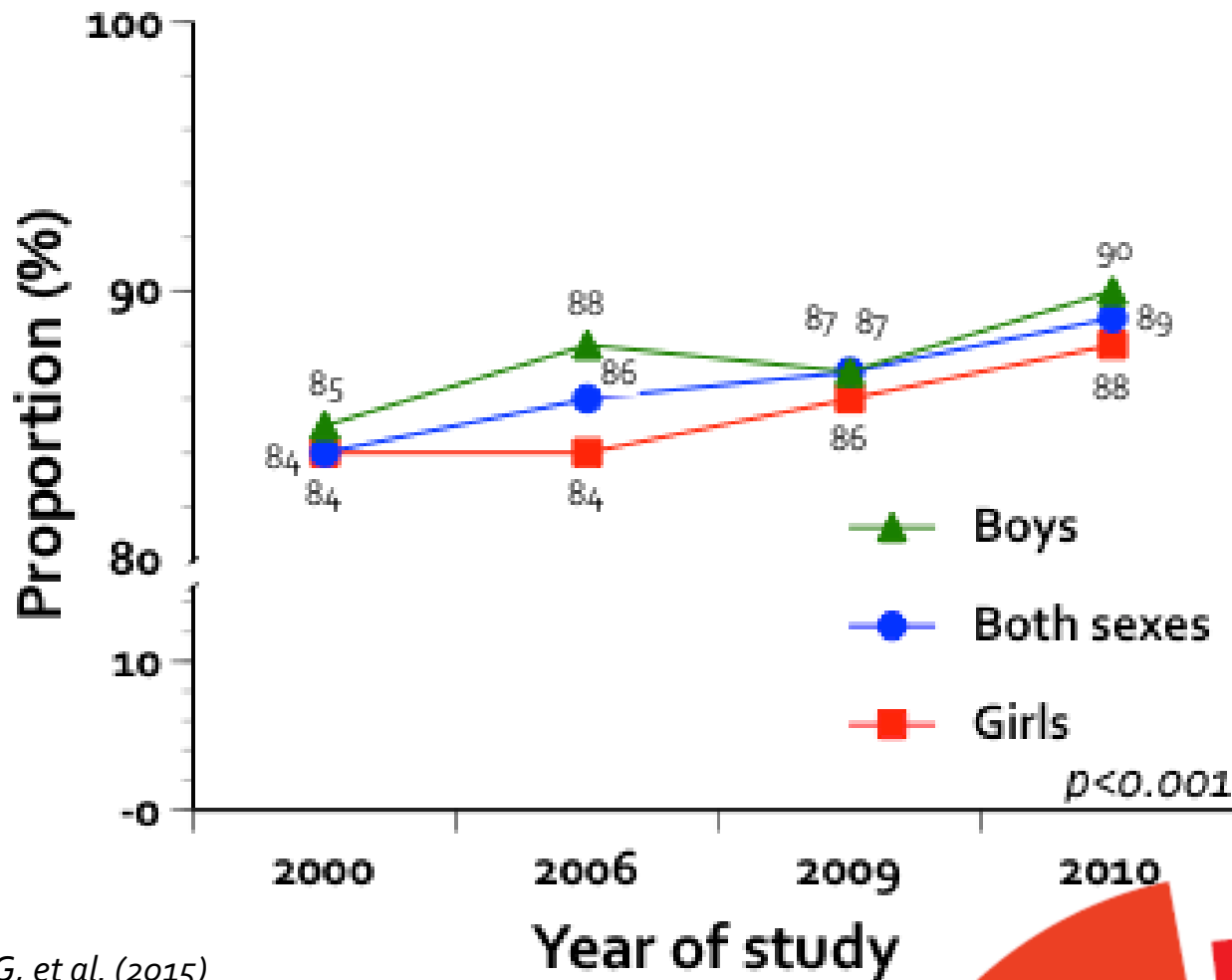
Iceland 2003-2014



Alcohol, tobacco and cannabis Iceland (14-15 years) 1997-2014



Happiness of adolescents Iceland 2000-2010



Conclusions

- **Historic economic collapse**
 - Unemployment
 - Felt increased relative child poverty
 - Policy of redistribution
- **Impact on child health**
 - No major short term impact, but ...
- **Future perspectives**
 - Mental health
 - Inequality
 - Uncertain



Merci beaucoup!