



**INRICH 6th Annual Workshop**  
*Mechanisms for socio-economic inequalities in health  
in children in a life course perspective*  
Karolinska institutet, Stockholm  
June 11-13, 2014

# The effects of the economic crisis on child health in a welfare policy perspective: **Case of Iceland**

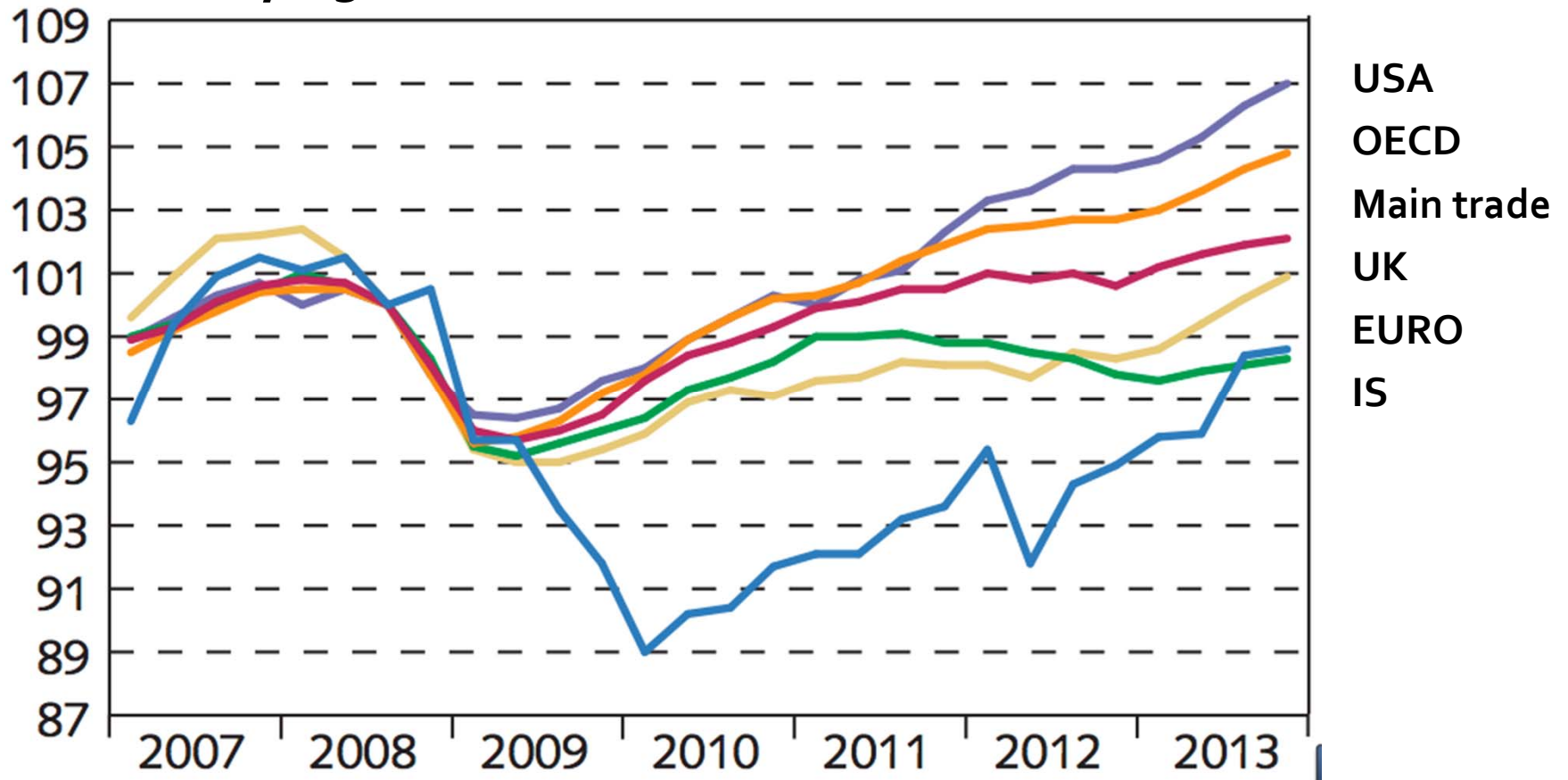
**Geir Gunnlaugsson**, MD, PhD, MPH  
Chief Medical Officer for Iceland





# Gross Domestic Product Iceland 2007-2013

Index, Q3 2008=100



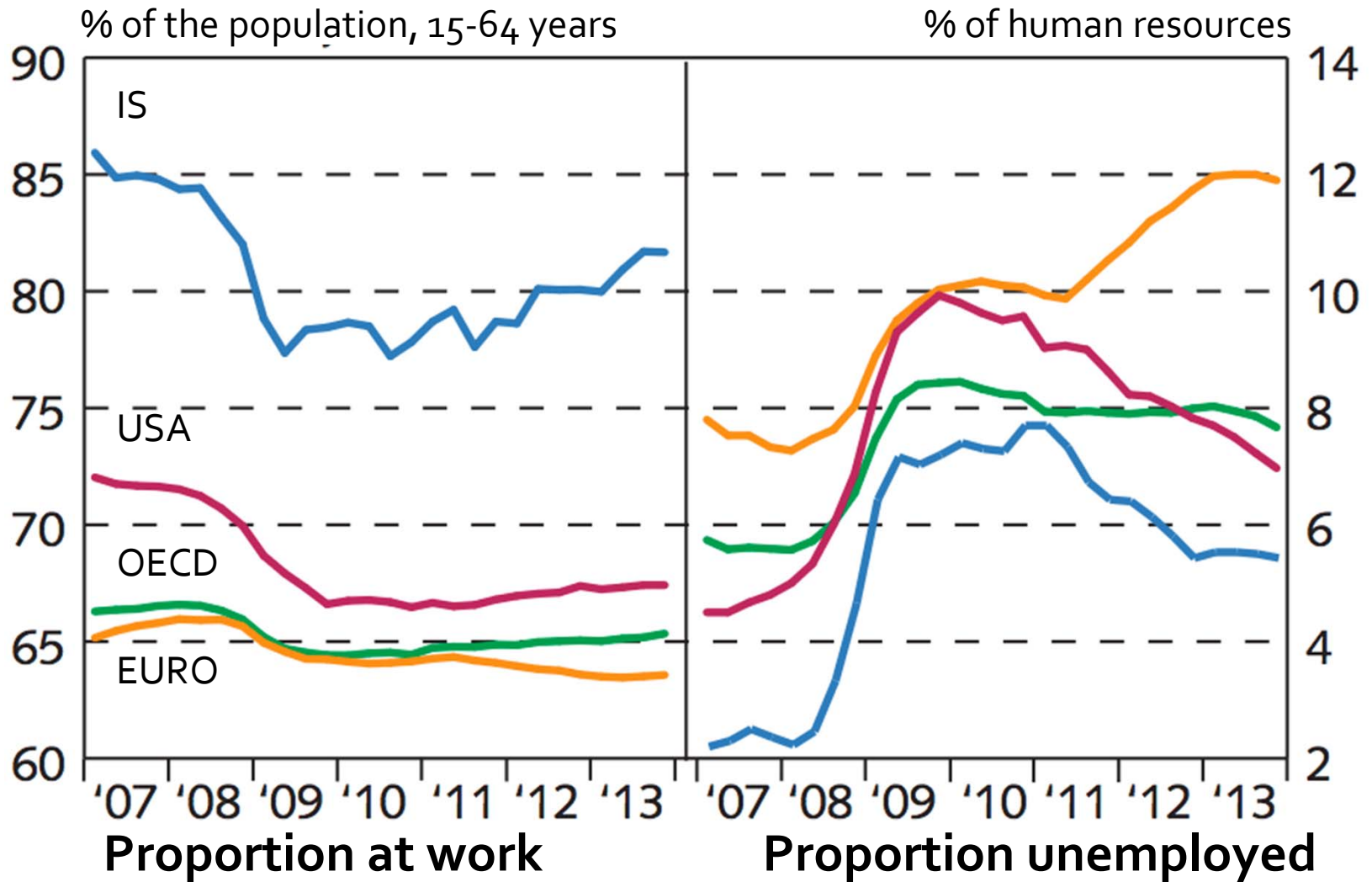




# Unemployment - Iceland

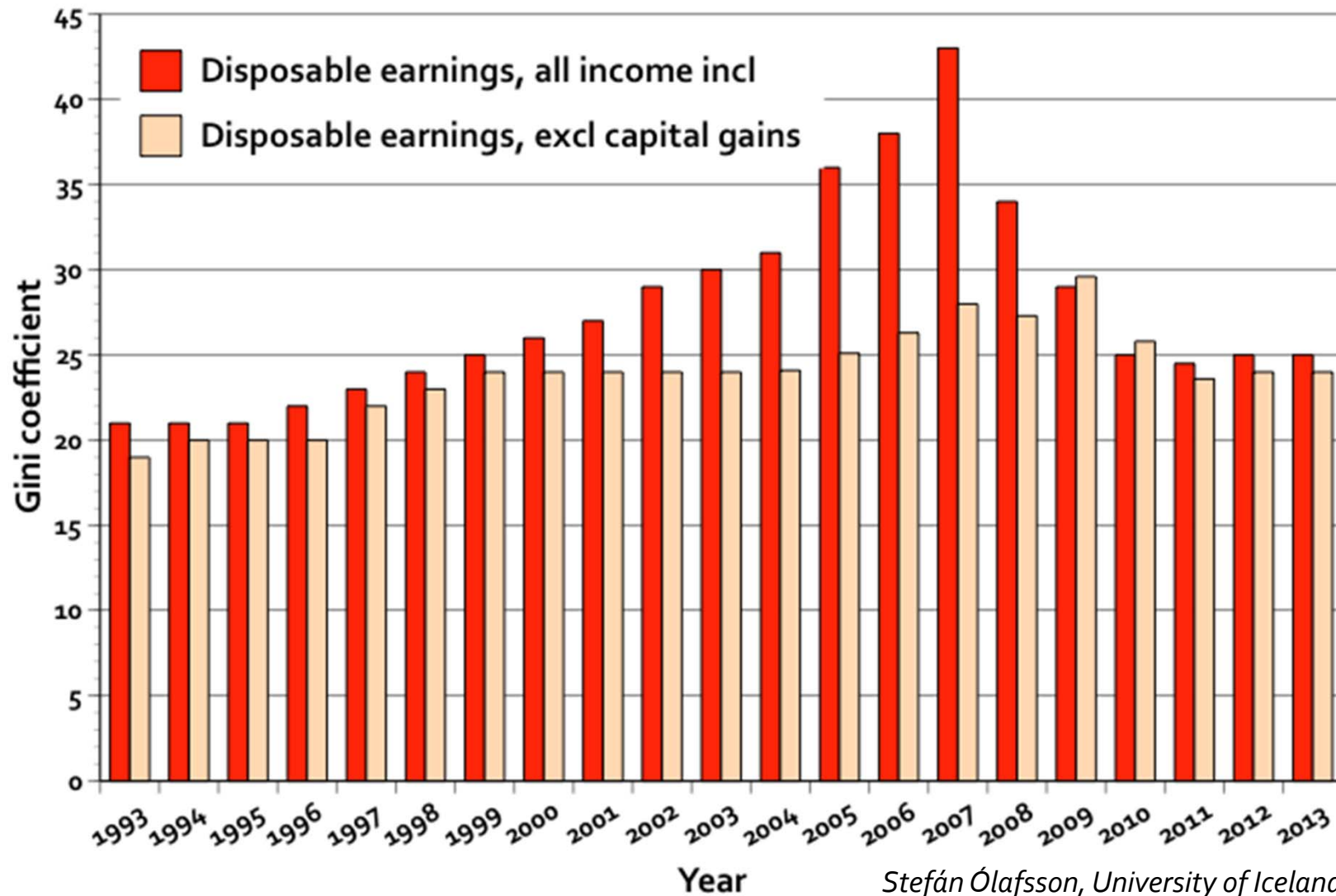
## 2007-2013

— Ísland — Bandaríkin — Evrusvæðið  
— OECD-ríki





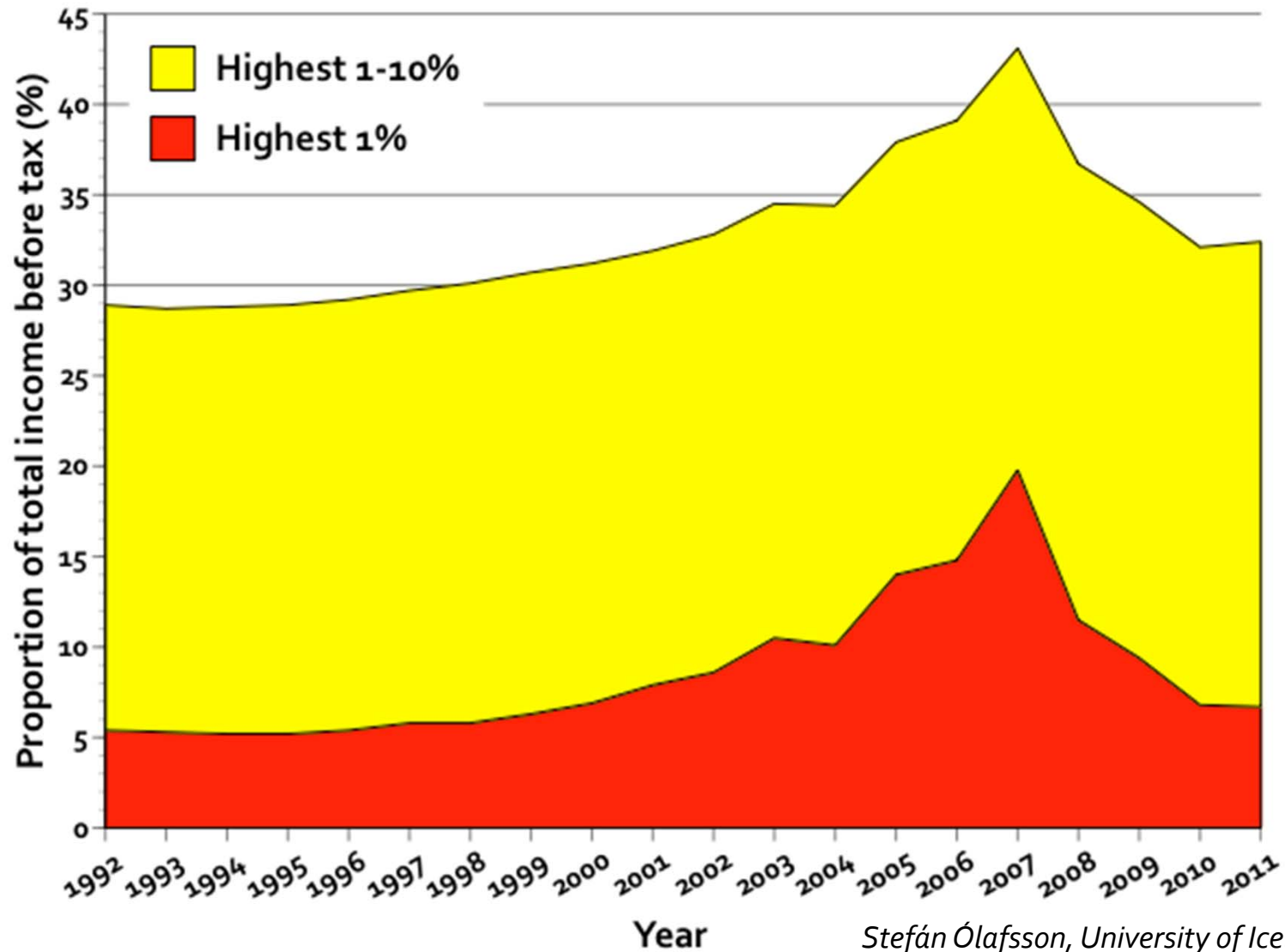
# Gini Coefficient Iceland 1993-2013





# Income distribution

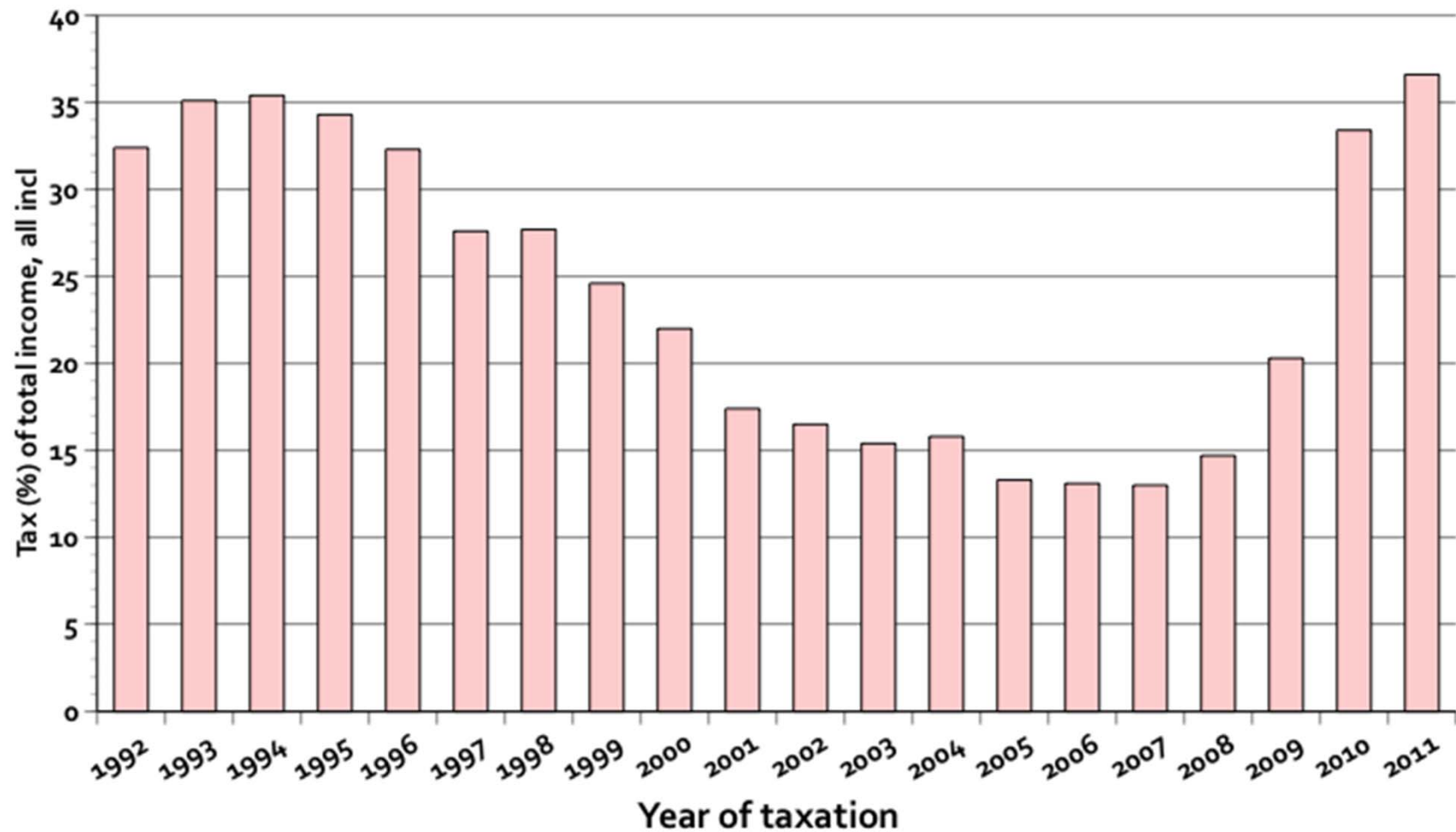
## Iceland 1992-2011





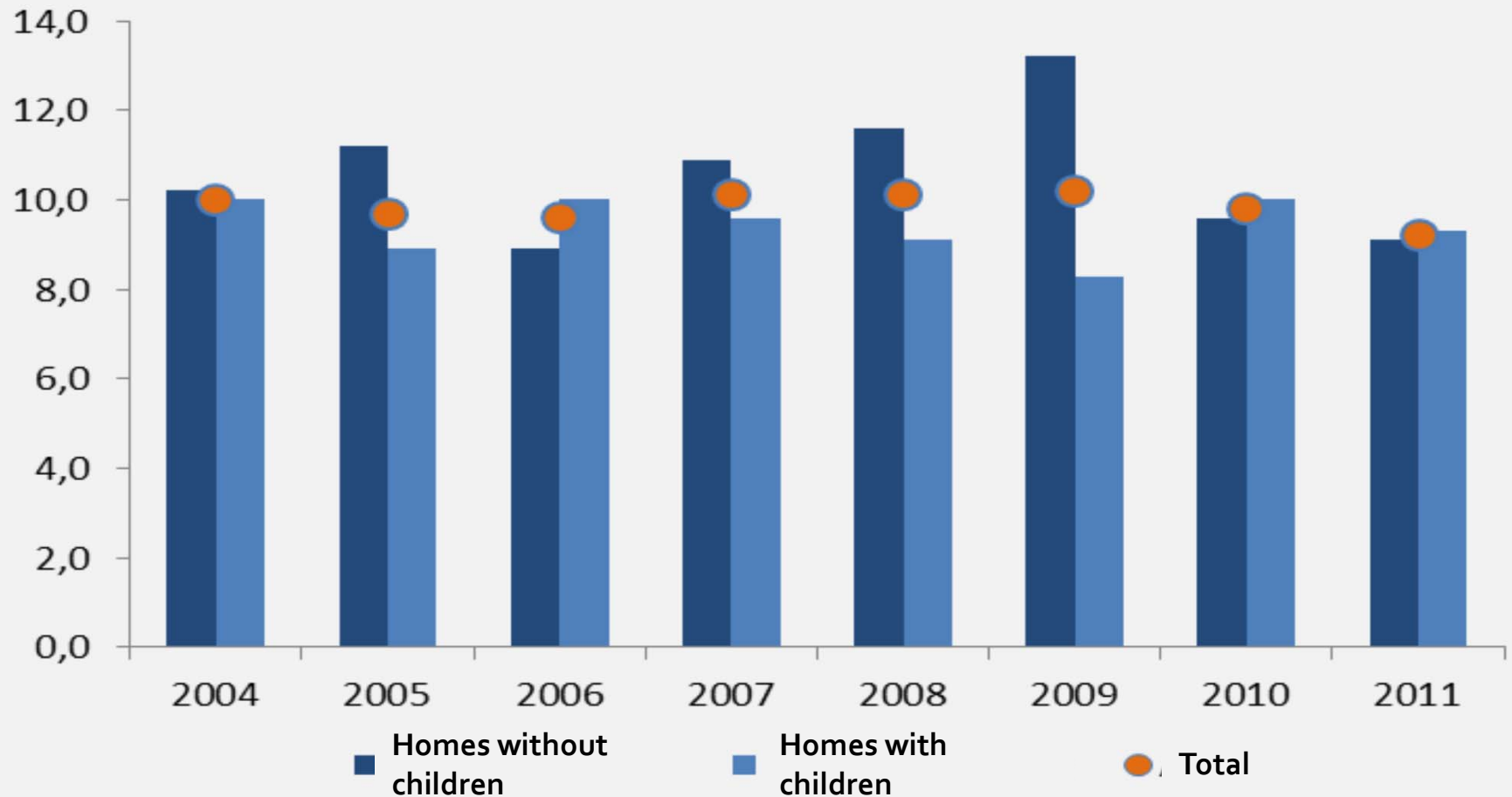
# Total effective tax burden

## Top 1% in Iceland 1992-2011





# Proportion of families with <60% of median of income

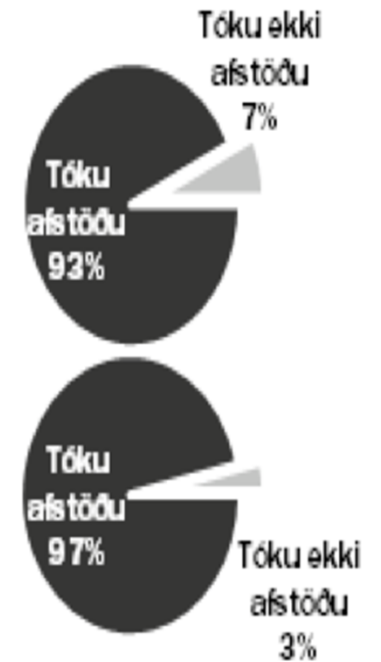
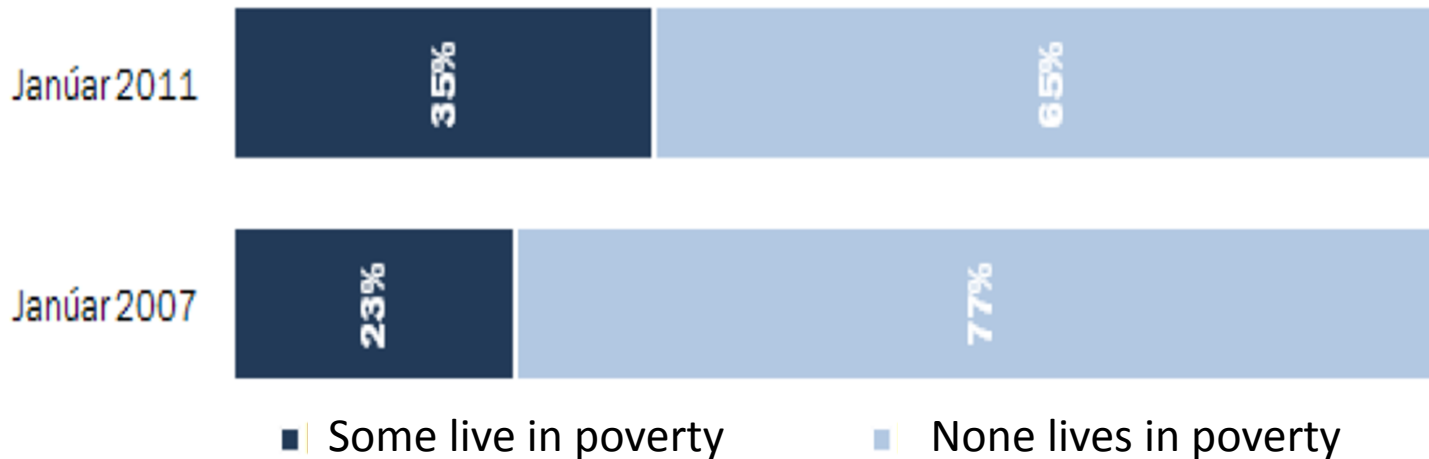






# Perception of family poverty

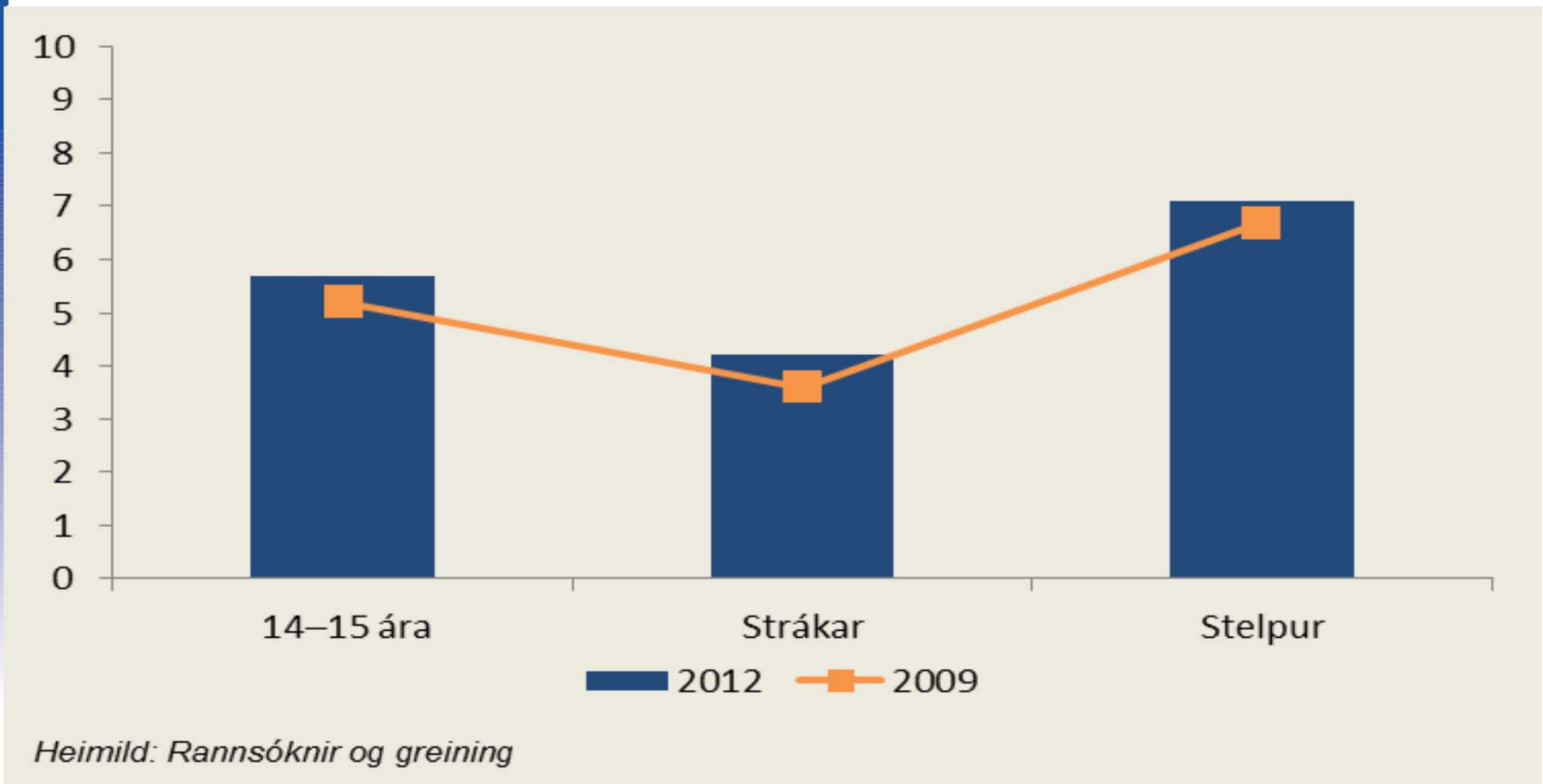
*Do you believe that someone in your family lives in poverty?*





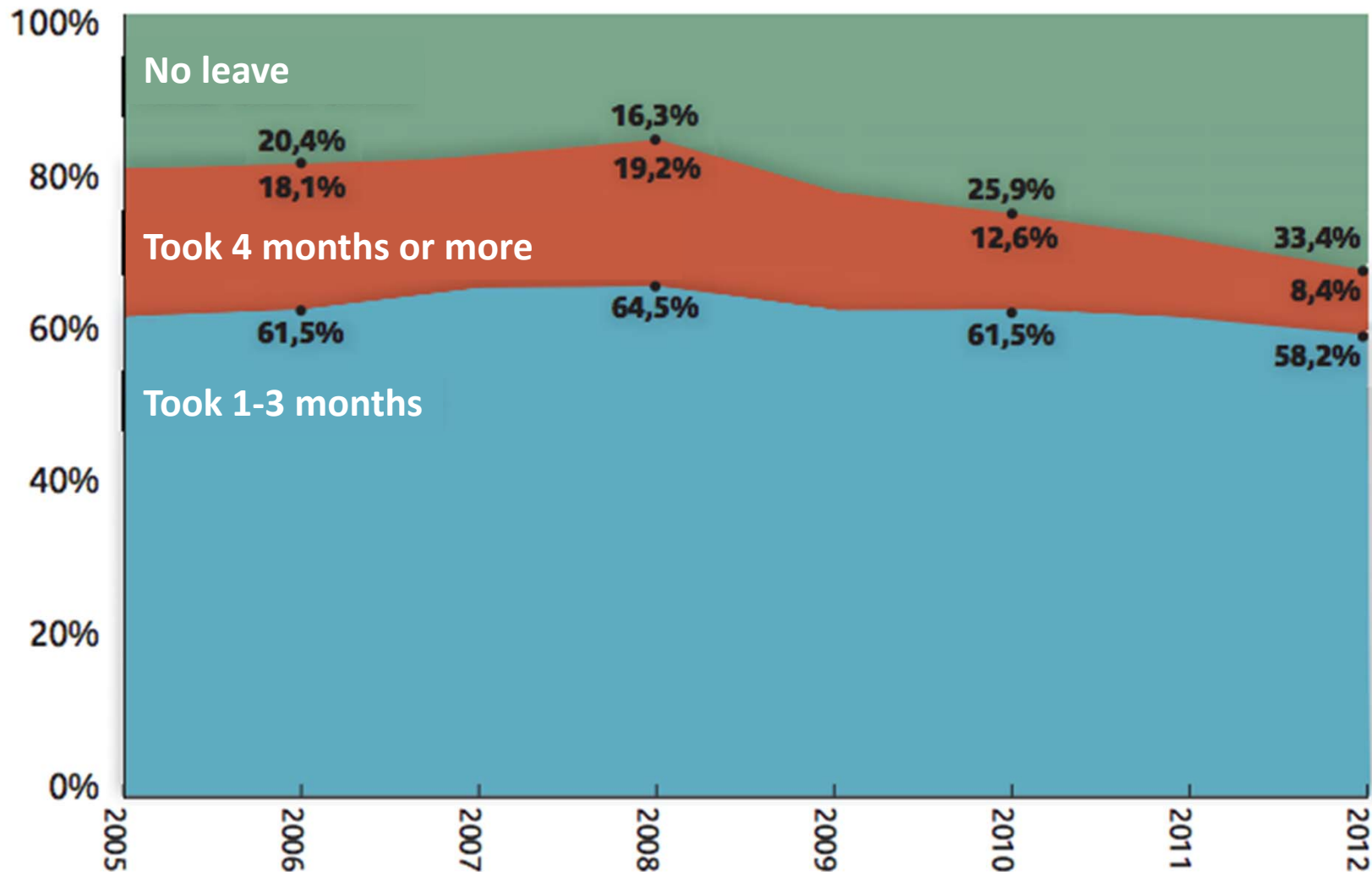
# Perception of poverty

Children 4-15 years who say their parents often/most often are in financial difficulties





# Paternity leave Iceland 2005-2012

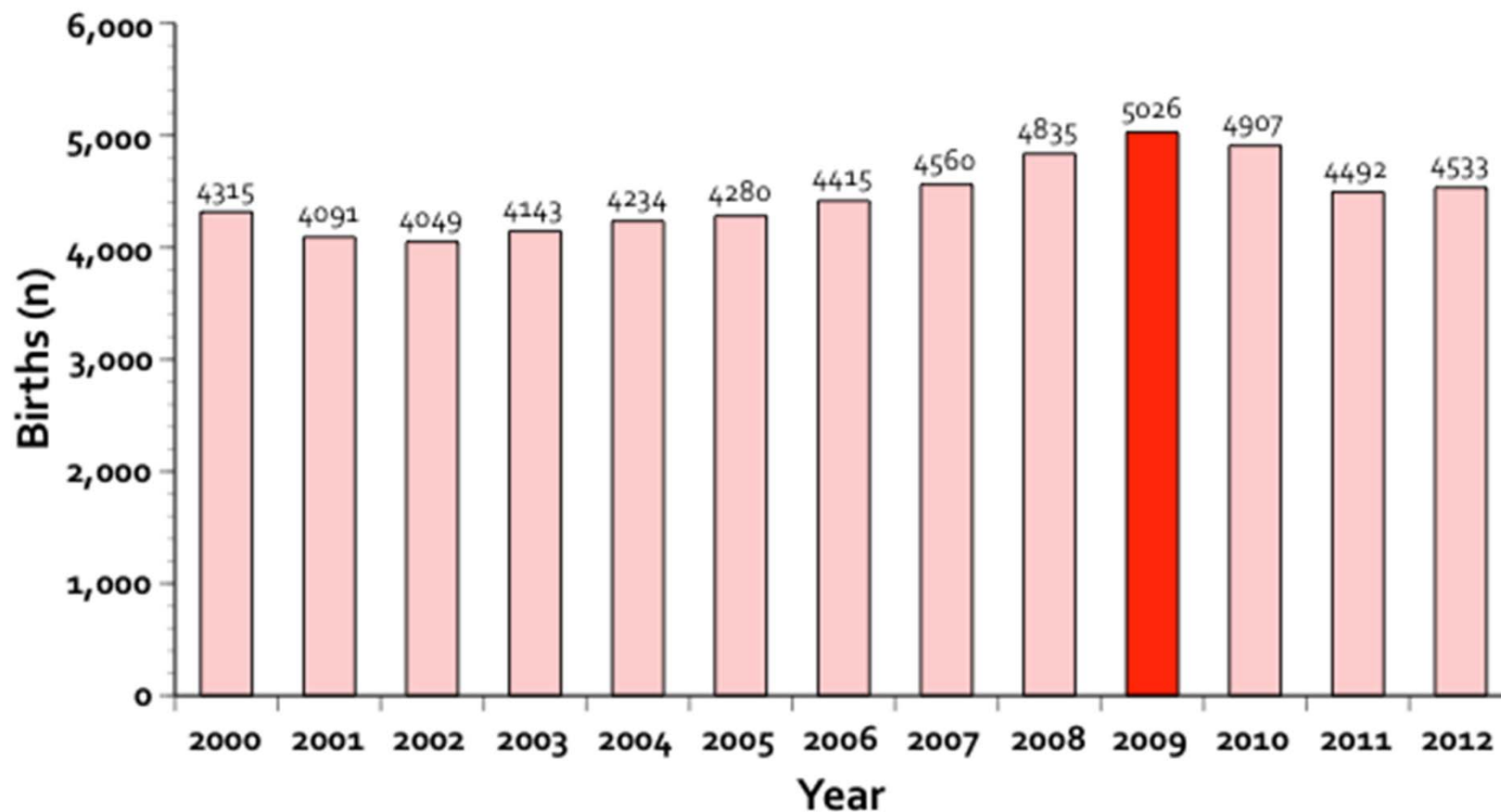




**Has the economic crisis  
had an impact on  
child health in Iceland?**



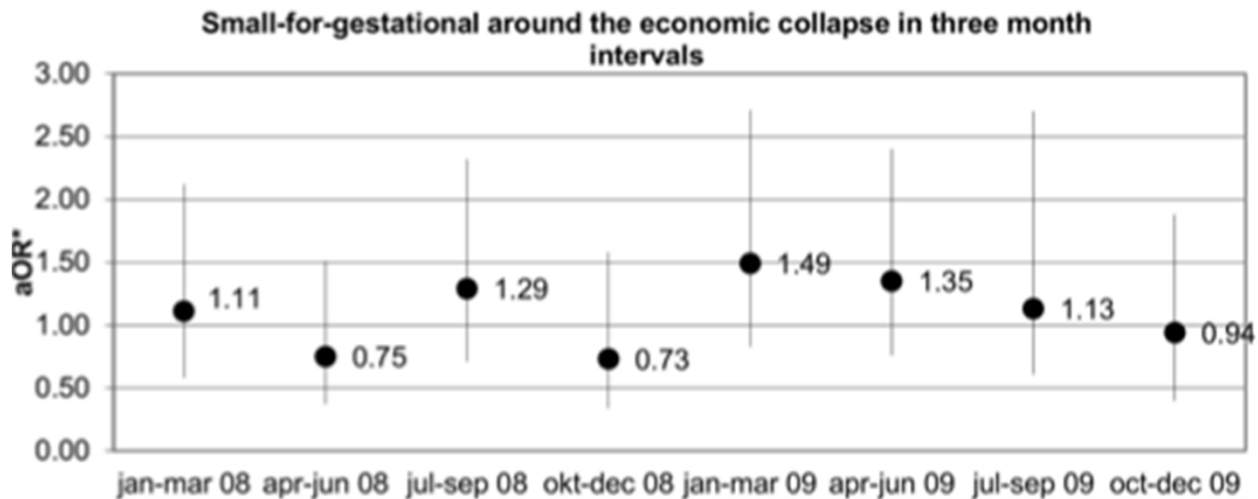
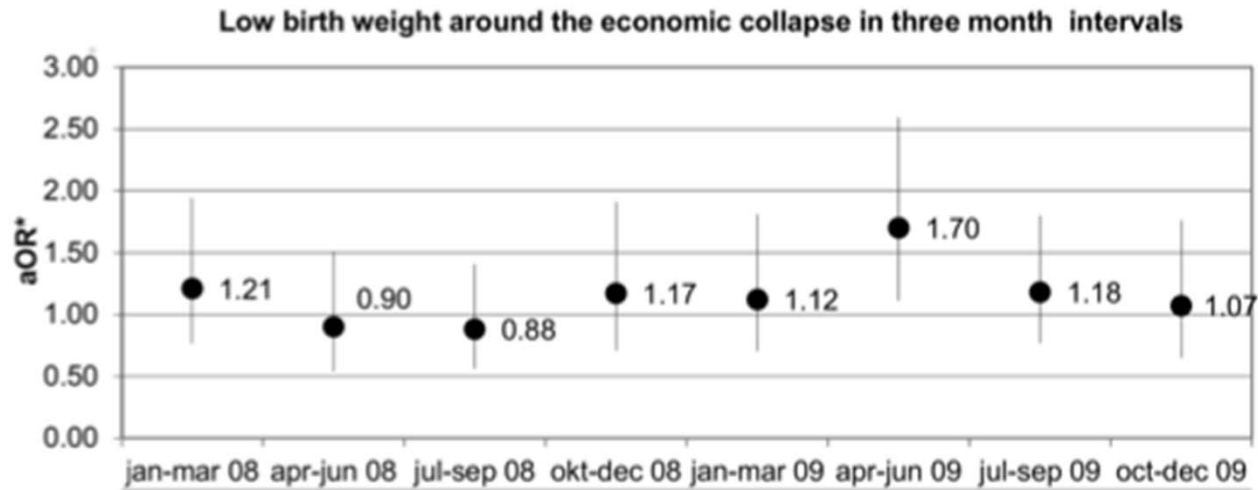
# Number of Births Pre- and Post Crash Iceland 2000-2012







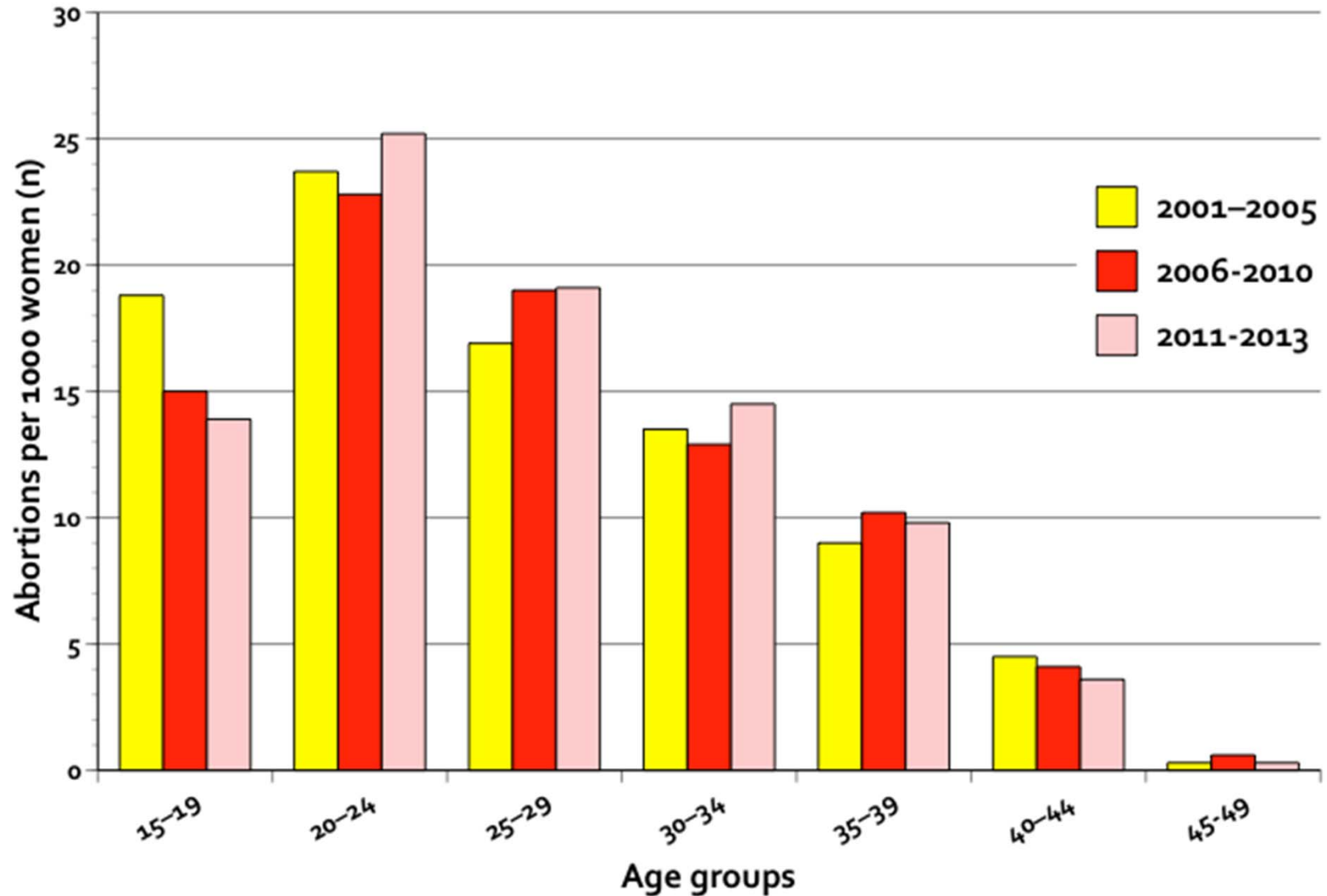
# Crisis and perinatal health Iceland Jan 2006-Dec 2009





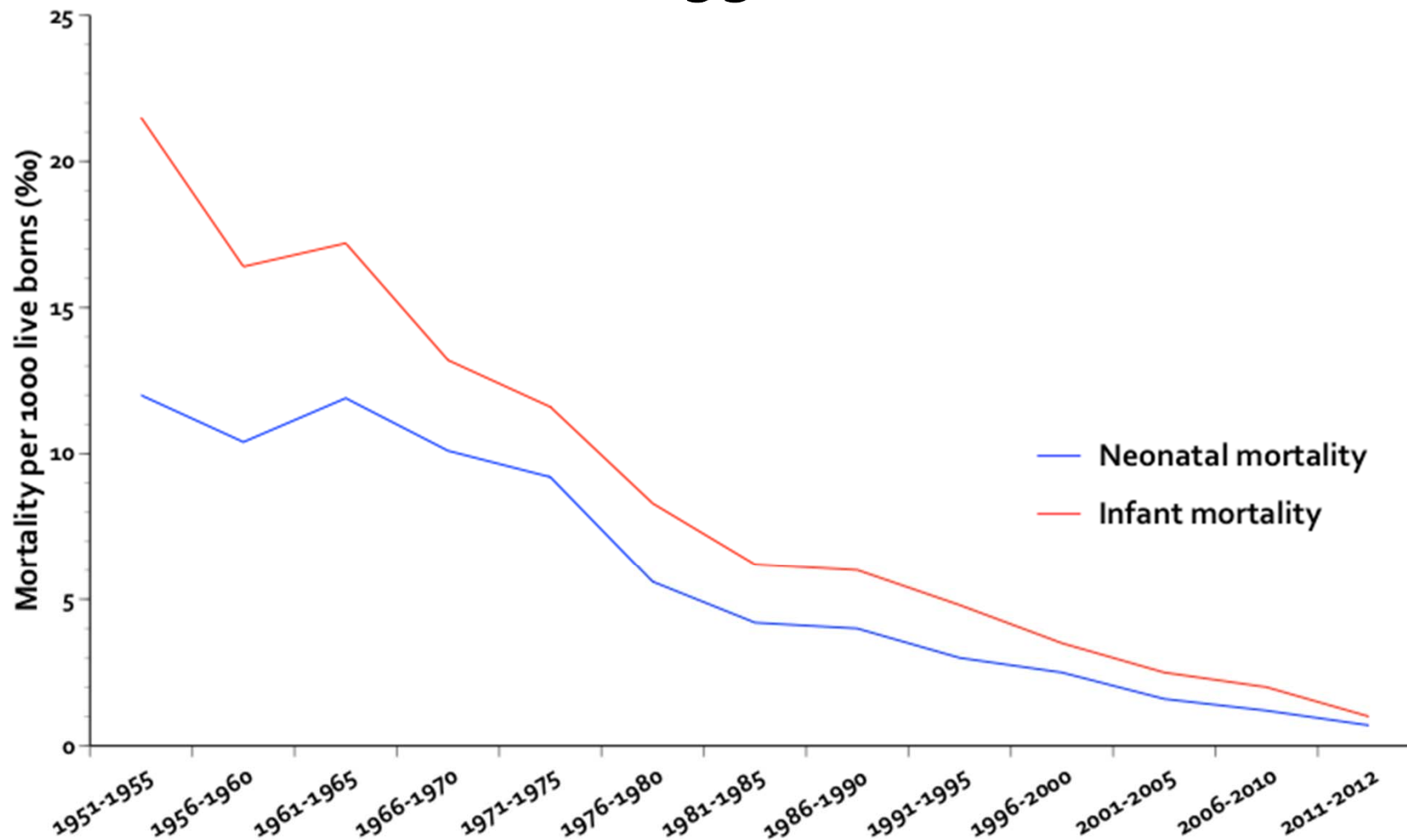
# Abortions

## Iceland 2001-2013





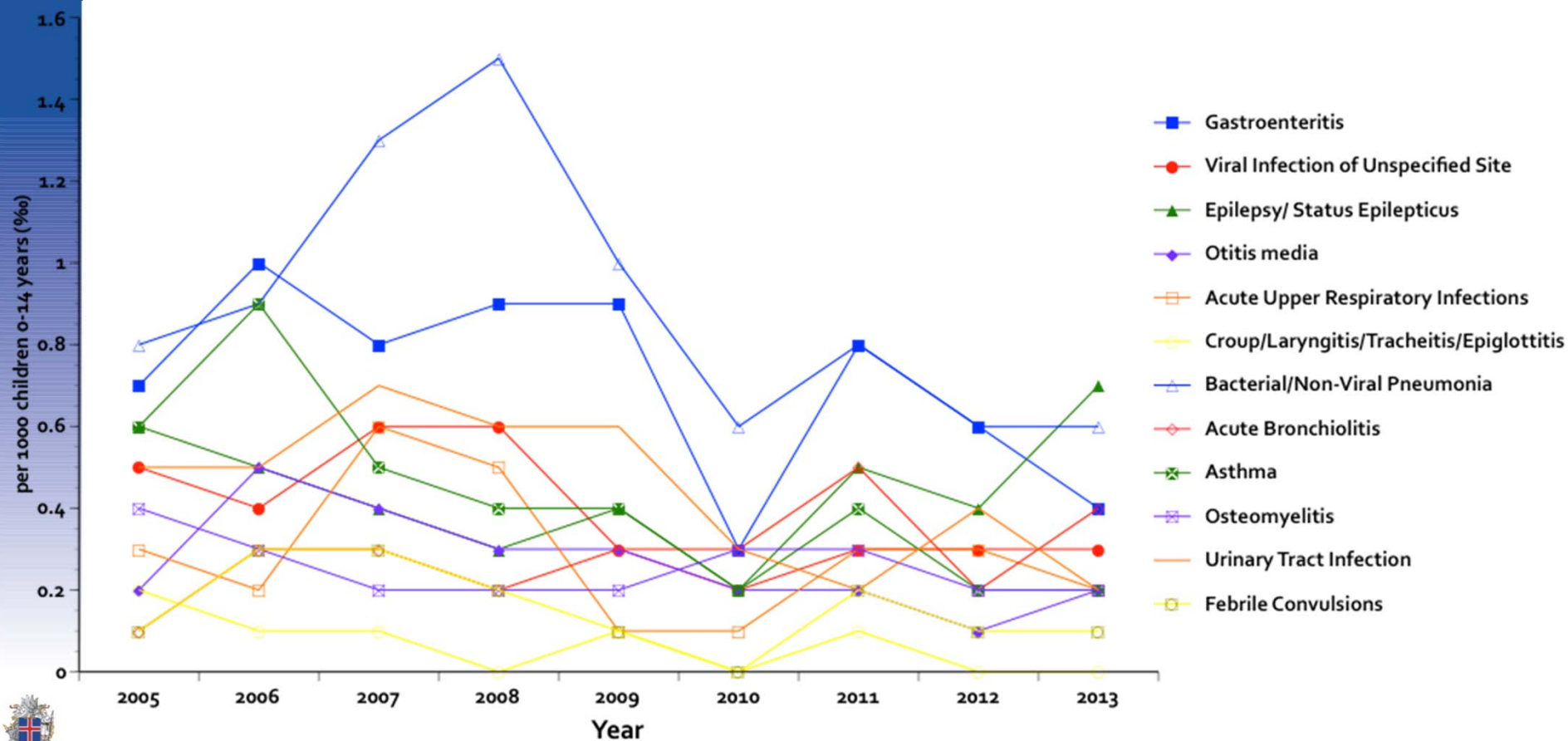
# Infant mortality Iceland 1951-2012





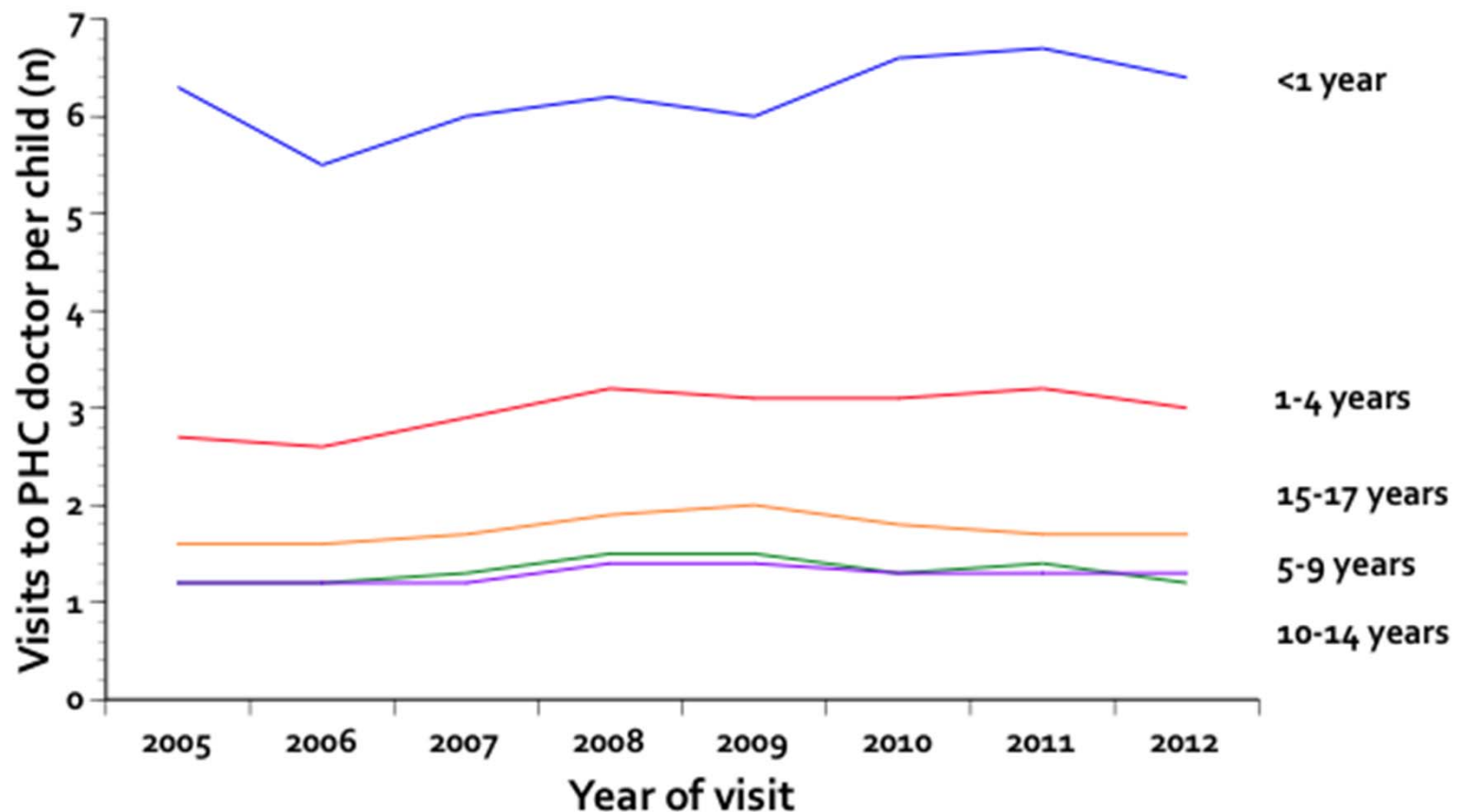
# Childhood morbidity

## Hospital admissions of children 1 mth-14 year





# Visits to PHC doctor

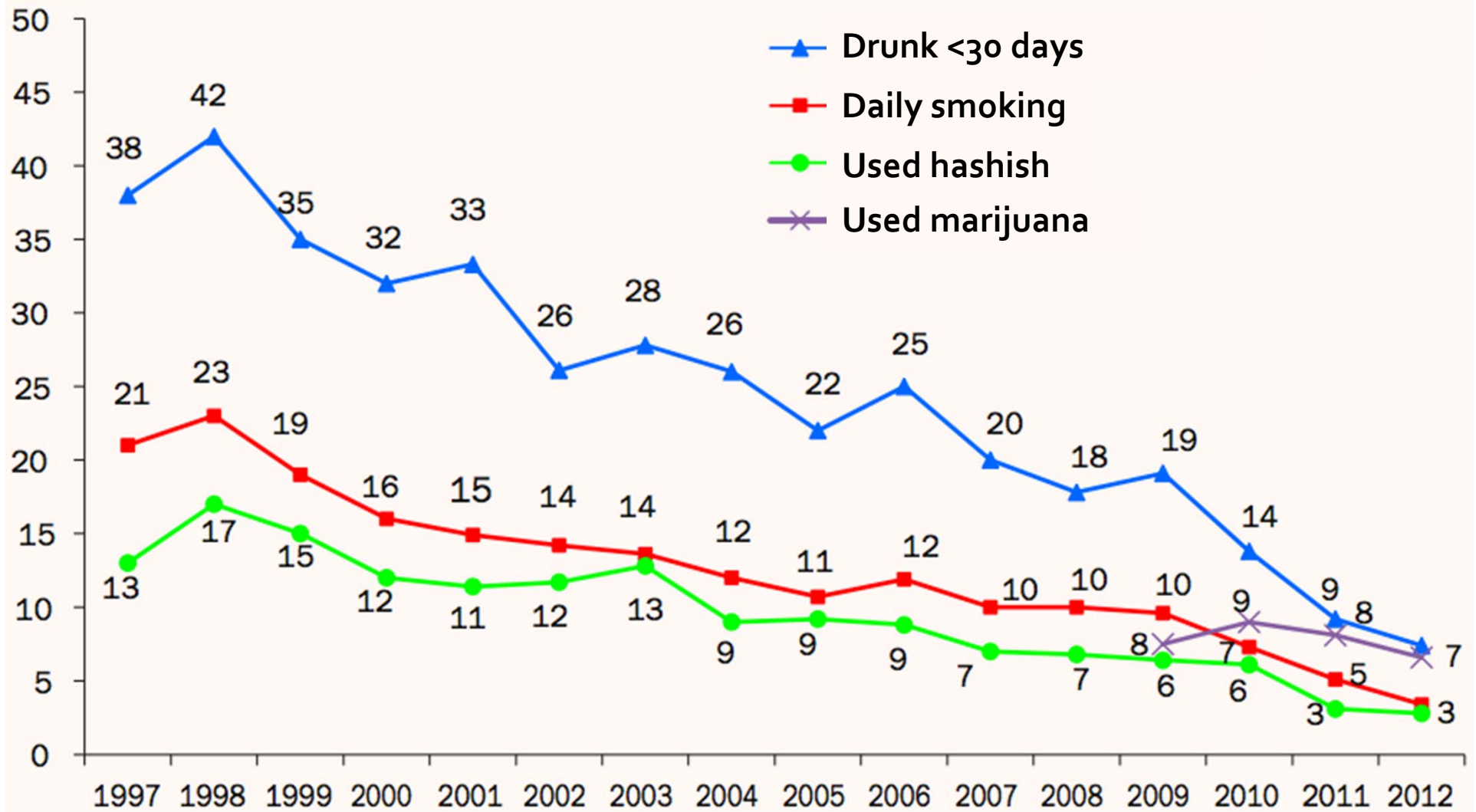






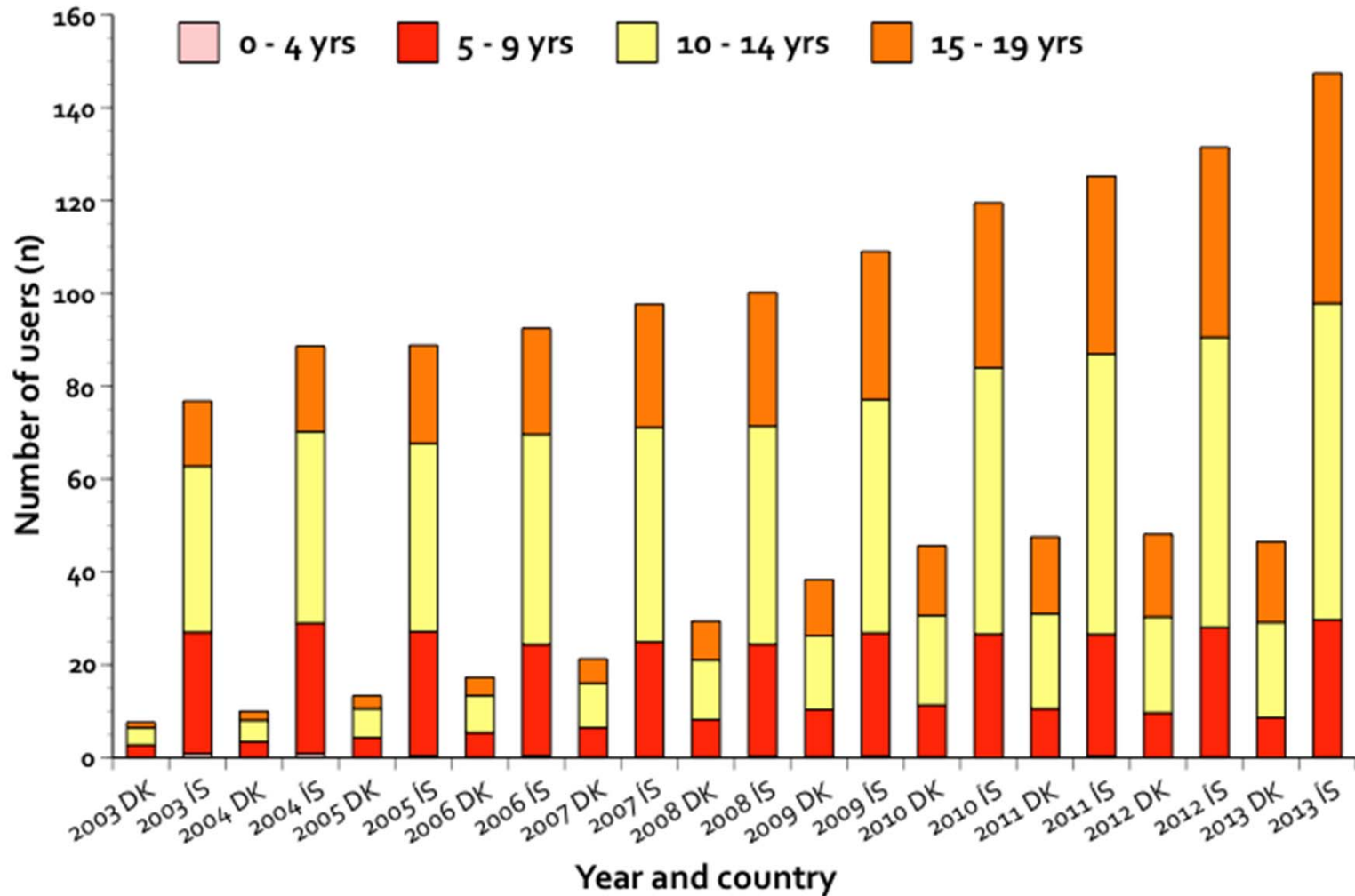
# Alcohol, tobacco and cannabis

## Iceland (14-15 years) 1997-2012



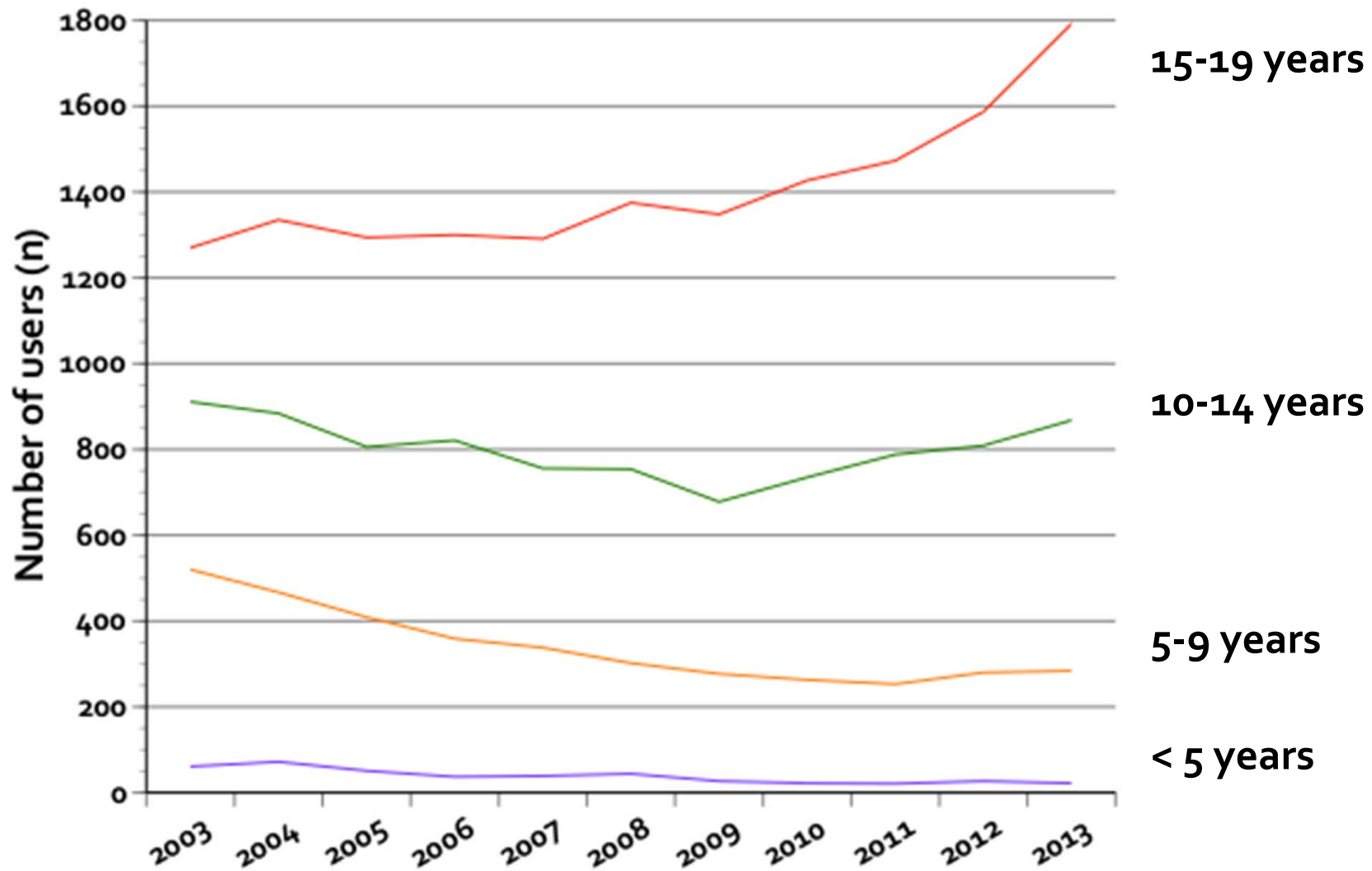


# Use of methylphenidate by age Iceland and Denmark 2003-2013





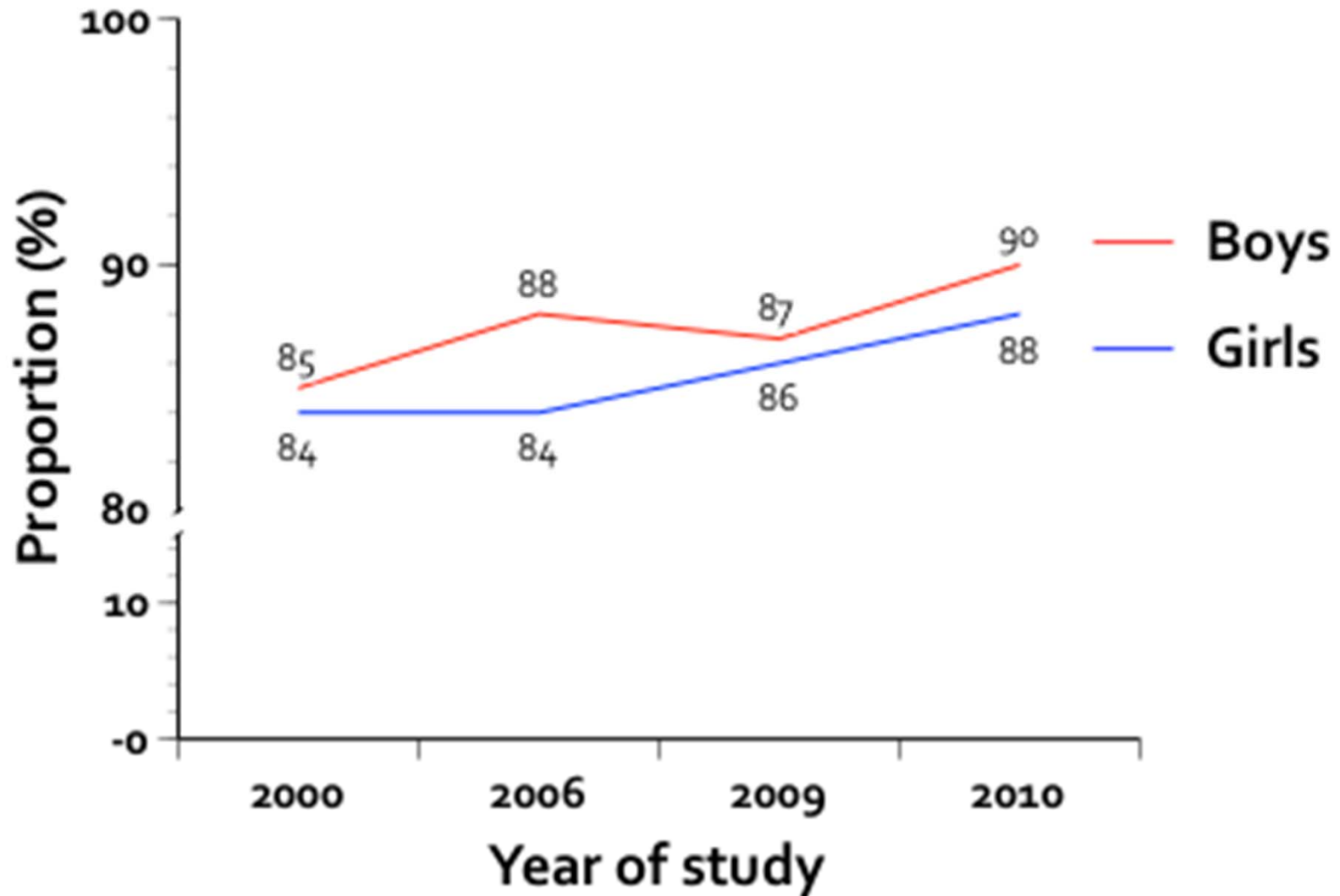
# Anti-depressives by age-group Iceland 2003-2013





# Happiness of adolescents

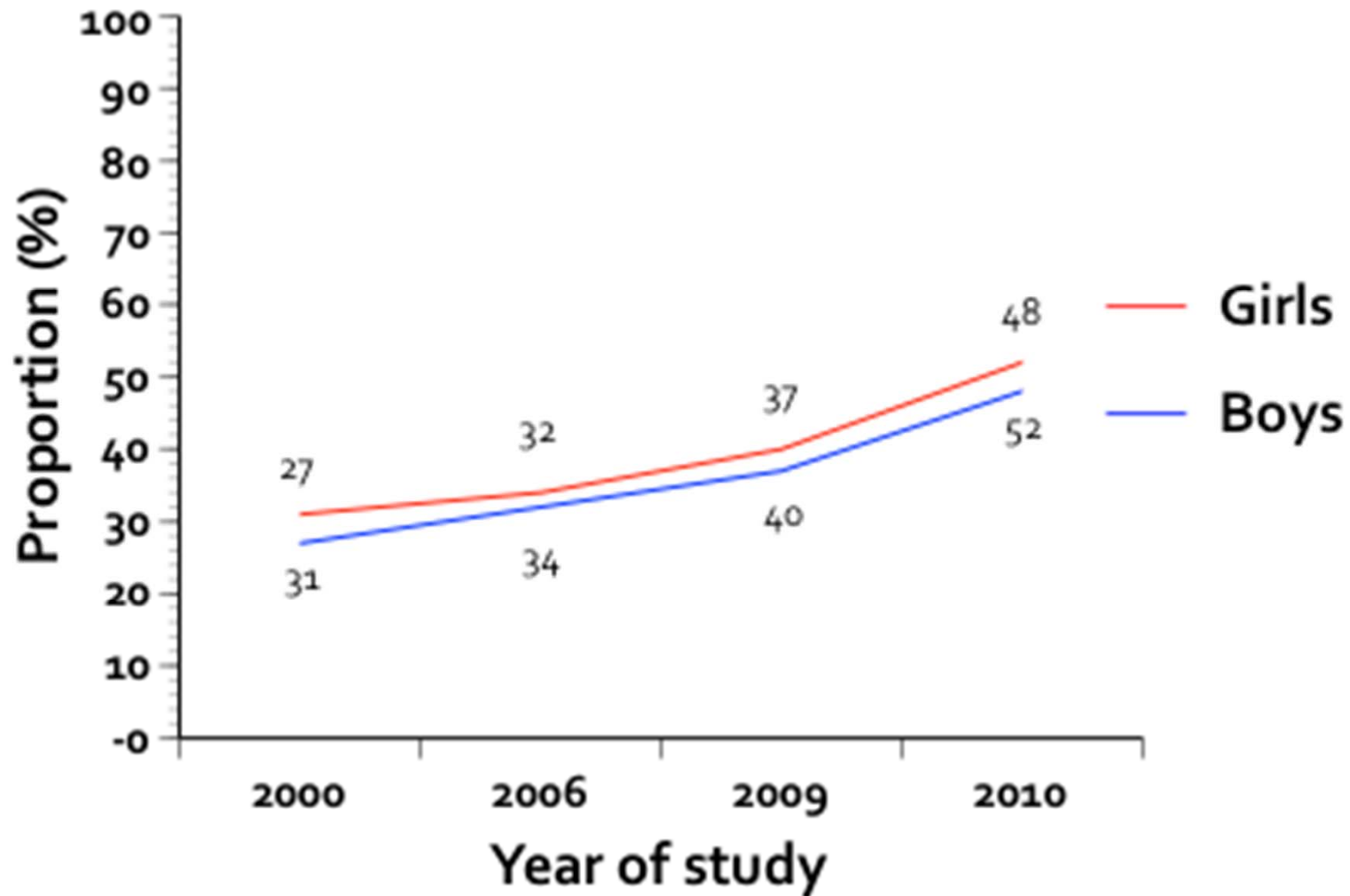
## Iceland 2000-2010





# Time spent with parents

Proportion of adolescents that spend often or almost always time with parents during the week







# Conclusions

- **Historic economic collapse**
  - Unemployment
  - Felt increased relative poverty
  - Social welfare policy
- **Impact on child health**
  - Inconclusive
- **Future perspectives**
  - Mental health
  - Inequality
  - Work in progress with Reykjavík Municipality



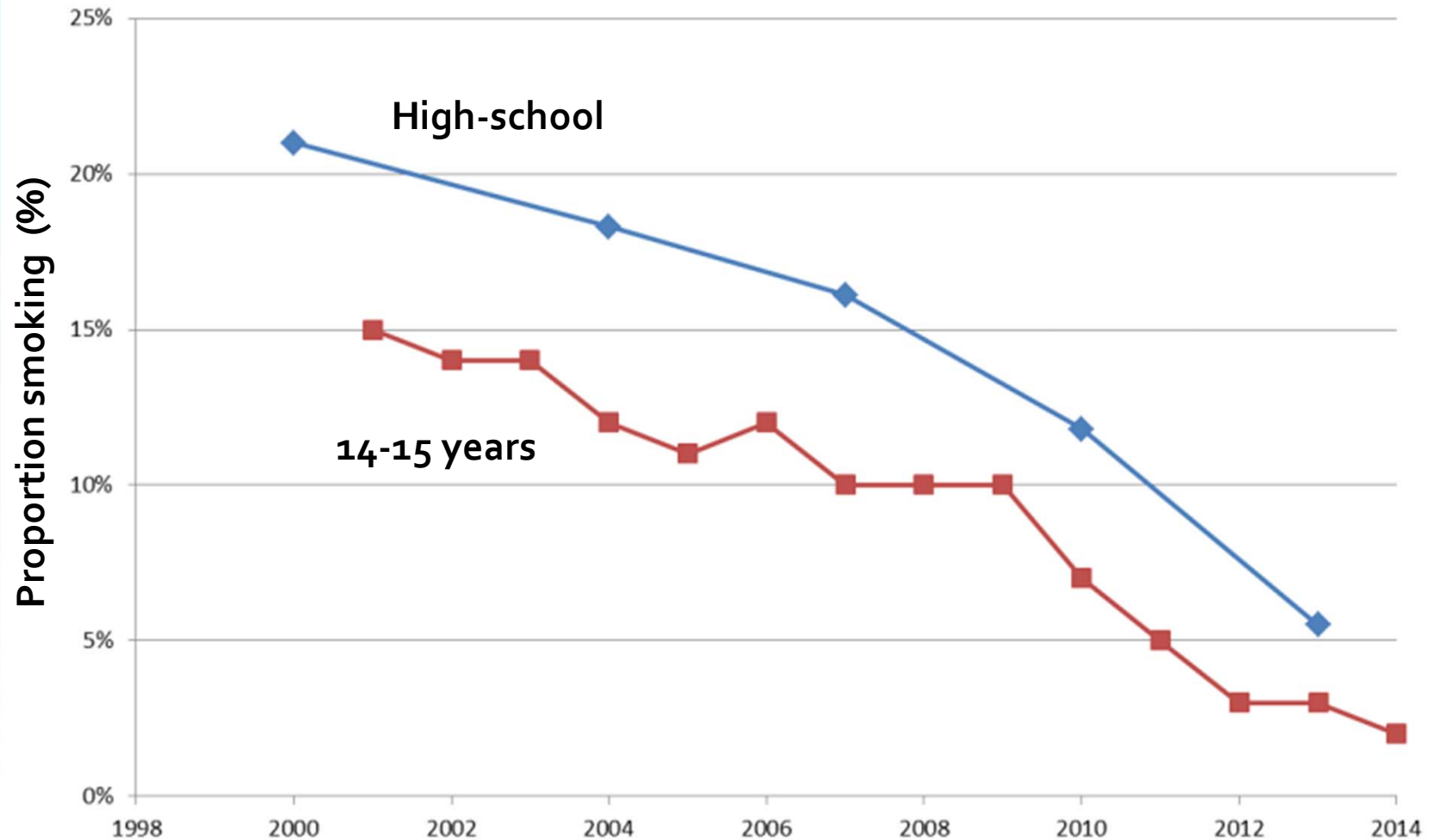








# Smoking of adolescents Iceland 1999-2014



Rannsóknir og greining/Talnabrunnur Directorate of Health, May 2014